

**Selwyn College Cambridge**

# **Accessibility Guide**

Last updated January 2025

# Contents

<b>Introduction .....</b>	<b>7</b>
Contact information .....	7
Medical facilities and first aid .....	7
University resources .....	8
<b>Travel .....</b>	<b>9</b>
Arriving by train .....	9
Arriving by bus .....	9
Arriving by car .....	9
Fellows' car park .....	10
Old Library car park .....	10
Library and Auditorium car park .....	11
Cripps Court car park .....	11
Arriving by bike .....	12
<b>Map of the College .....</b>	<b>13</b>
<b>Entrances .....</b>	<b>14</b>
Main entrance - The Porters' Lodge .....	14
Other pedestrian entrances .....	15
Ramsay Murray Gate .....	15
Grange Road Gate .....	15
Sidgwick Gate .....	16
<b>General layout of the College .....</b>	<b>17</b>
Old Court .....	17
Ann's Court .....	18
Cripps Court .....	18
<b>Accessible routes around College .....</b>	<b>19</b>
Old Court & Ann's Court .....	19
Wayfinding signage .....	20
Pathways .....	20
Cripps Court .....	21
<b>Old Court .....</b>	<b>22</b>
Porters' Lodge .....	23
Accessible entrance .....	23
Front entrance (not accessible) .....	24

Reception area/front desk .....	24
Toilets .....	24
Hearing and visual impairments.....	24
Dining Hall & Servery .....	25
Main Dining Hall.....	25
Borradaile Room.....	26
Servery .....	26
Accessible entrance .....	27
Main entrance (not accessible) .....	30
Special diets & allergies .....	30
Accessible toilets.....	30
Hearing and visual impairments.....	30
Café Bar .....	31
Accessible entrance .....	31
Main bar area.....	32
Special diets & allergies .....	32
Accessible toilets.....	32
Hearing and visual impairments.....	32
Chapel .....	33
Accessible entrance .....	33
Accessible toilets.....	34
Common rooms and meeting rooms.....	35
Fellows' Parlour .....	35
Accessible entrance.....	35
Front entrance (non-accessible) .....	37
Accessible toilets .....	37
Hearing and visual impairments.....	37
Harrison Room.....	38
Accessible entrance.....	38
Front entrance (non-accessible) .....	42
Accessible toilets .....	42
Hearing and visual impairments.....	42
Old SCR.....	43
Accessible entrance.....	43

Front entrance (non-accessible) .....	47
Accessible toilets .....	47
Hearing and visual impairments.....	47
Walters Room .....	48
Accessible entrance.....	48
Accessible toilets .....	48
Hearing and visual impairments.....	48
Arthur Lyttelton Room.....	49
Entrance.....	49
Accessible toilets .....	49
Hearing and visual impairments.....	49
Kathleen Lyttelton Room (not accessible) .....	50
Entrance.....	50
Accessible toilets .....	50
Hearing and visual impairments.....	50
Chadwick Room.....	51
Accessible entrance.....	51
Front entrance (non-accessible) .....	53
Accessible toilets .....	53
Hearing and visual impairments.....	53
Toilets (accessible & standard).....	54
Old Library.....	55
Accessible entrance .....	55
Seminar/meeting rooms.....	56
Medical & Veterinary Resources Room.....	56
Abdey Family - Seminar Room 1.....	56
Peter Cartwright - Seminar Room 2.....	56
Macpherson - Seminar Room 3.....	56
Nigel Grimshaw - Seminar Room 4 .....	56
Alumni & Development Office.....	57
Archives, Rare Books, and Special Collections.....	57
Accessible toilets.....	58
Hearing and visual impairments.....	58
Accommodation (Stairs A-F).....	59



Accessible accommodation.....	59
Room F-05.....	59
Standard accommodation.....	60
Laundry .....	60
<b>Ann's Court.....</b>	<b>61</b>
Bartlam Library .....	61
Entrance .....	61
Accessible toilets.....	63
Hearing and visual impairments.....	63
Opening hours and contact details.....	63
Quarry Whitehouse Auditorium.....	64
Events space.....	64
Auditorium .....	64
Accessible toilets.....	64
Hearing and visual impairments.....	64
The Christopher Dobson Building (College Offices) .....	65
Entrance .....	65
Lift and stairs to upper floors.....	65
Accessible toilet/shower room.....	66
Hearing and visual impairments.....	66
JCR .....	67
Entrance .....	67
South Entrance (accessible).....	67
North Entrance (not accessible) .....	67
JCR and communal kitchen.....	68
TV room .....	68
Computer room .....	68
Accessible toilets.....	68
Hearing and visual impairments.....	68
Laundry (accessible).....	69
Hearing and visual impairments.....	70
Accommodation (Stairs O-R).....	71
Accessible accommodation.....	71
Standard accommodation.....	71

<b>Cripps Court .....</b>	<b>72</b>
Front entrance.....	72
The Diamond.....	74
Entrance .....	74
Events space.....	74
Accessible toilets.....	74
Hearing and visual impairments.....	74
MCR.....	75
Entrance .....	75
Accessible toilets.....	75
Hearing and visual impairments.....	75
College Gym .....	76
Entrance .....	76
Accessible toilets & shower.....	76
Hearing and visual impairments.....	76
Accommodation.....	77
Accessible accommodation.....	77
Room I-02.....	77
Room I-03.....	77
Standard Accommodation .....	77
Laundry (accessible).....	78
<b>Hostel Accommodation (accessible) .....</b>	<b>79</b>
1 Selwyn Gardens .....	79
Entrance .....	79
Accommodation .....	79
Walters Lodge.....	80
Entrance .....	80
Accommodation .....	81
<b>Gardens.....</b>	<b>82</b>
Accessible toilets.....	84

# Introduction

At Selwyn College we welcome students, academics, staff and visitors of all abilities, and we are committed to supporting those with disabilities or other challenges during their time with us. This document is a guide to accessing and moving around our unique and historic site, and to the accessibility measures in place to allow everyone to participate fully in the life of the college. This remains a work in progress that we want to expand and improve, so we welcome feedback. Please give the [Bursar](#) and/or the [Operations Manager](#) your input where you think there are things we can do better.

## Contact information

**Address:** Selwyn College, Grange Road, Cambridge CB3 9DQ  
**Tel:** (+44) (0) 1223 335846  
**Email:** [porters@sel.cam.ac.uk](mailto:porters@sel.cam.ac.uk)  
**Home page:** [www.sel.cam.ac.uk](http://www.sel.cam.ac.uk)

We encourage you to contact us if you have any questions about the information in the guide or wish to discuss accessibility at Selwyn.

The Porters' Lodge is staffed 24hrs and the Porters will be happy to answer or re-direct any questions.

Or please feel free to contact the relevant team directly:

- Prospective students: [admissions@sel.cam.ac.uk](mailto:admissions@sel.cam.ac.uk)  
Current students should speak to the Tutorial Office or your Tutor. Further information is available in the [Undergraduate Guide](#) and [Postgraduate Guide](#)
- Alumni and friends: [alumni-office@sel.cam.ac.uk](mailto:alumni-office@sel.cam.ac.uk)
- Conference/overnight guests: [conferences@sel.cam.ac.uk](mailto:conferences@sel.cam.ac.uk)
- Chapel and choir services: [chapel-administrator@sel.cam.ac.uk](mailto:chapel-administrator@sel.cam.ac.uk)
- Prospective employees: [HR@sel.cam.ac.uk](mailto:HR@sel.cam.ac.uk)
- Accommodation queries: [accommodation@sel.cam.ac.uk](mailto:accommodation@sel.cam.ac.uk)

## Medical facilities and first aid

The College Nurse & Welfare Officer is in college on weekdays throughout the year, and is available (by appointment) to staff and students wishing to discuss health or welfare issues, as well as to respond to emergencies.

**Office:** [Christopher Dobson Building](#) level 2; treatment room in B6, [Old Court](#).  
**Email:** [nurse@sel.cam.ac.uk](mailto:nurse@sel.cam.ac.uk)  
**Tel:** +44 (0) 1223 335898

If you need urgent health/welfare advice, contact the Porters' Lodge:

**Email:** [porters@sel.cam.ac.uk](mailto:porters@sel.cam.ac.uk)  
**Tel:** (+44) (0) 1223 335846

The Porters are First Aid qualified and are available 24hrs. Additional first aiders are on duty throughout the college during working hours – posters with contact information are on notice boards throughout the College. First Aid Kits and AEDs are located throughout the College.

## University resources

Students can access further information and support from the University's Accessibility & Disability Resource Centre: <https://www.disability.admin.cam.ac.uk/>

**Email:** [disability@admin.cam.ac.uk](mailto:disability@admin.cam.ac.uk)

**Tel:** +44 (0) 1223 332 301

# Travel

Selwyn College is located on Grange Road, between West Road and Sidgwick Avenue, across the river and approximately 15 minutes' walk from Cambridge city centre, up a gentle incline.

A useful interactive map of University locations can be found on the University website:

<https://map.cam.ac.uk>

## Arriving by train

Cambridge railway station is approximately 1.7km/35 minutes' walk from Selwyn, and has direct links to London Kings Cross/St. Pancras, London Liverpool Street, Stanstead and Gatwick airports, Norwich, Brighton, Ipswich and Kings Lynn.

The station has step free access to all platforms. To request assistance at Cambridge station, or for further accessibility information, please see (external website):

<https://www.greateranglia.co.uk/travel-information/station-information/cbg>

For information on accessible train travel, please see (external website):

<https://www.nationalrail.co.uk/on-the-train/accessible-train-travel-and-facilities/>

There is a taxi rank directly outside the station concourse, and nearby bus stops serving routes throughout Cambridge.

## Arriving by bus

The U1 stops on Grange Road (directly outside Selwyn) and the U2 bus stops on West Road (where the nearest College entrance is the [Ramsay Murray Gate](#)). These buses serve routes between Girton Corner/Eddington, Cambridge Station and the Biomedical Campus. Ask for 'Selwyn College' or 'Grange Road' when buying your ticket. There is a discount for University Card holders.

For buses coming from the station/city centre, the bus stop is on the opposite side of the road from the college entrance. Please note that there is no dedicated pedestrian crossing.

For more information or to plan your bus journey, please see (external websites):

<https://transport.cambridgeshirepeterborough-ca.gov.uk/buses/>

<https://www.cambridgeshirebus.info/>

## Arriving by car

The College postcode is **CB3 9DQ**

Leave the M11 at junction 12 and head into Cambridge along the A603 (Barton Road), turn left into Grange Road. After about 500m Selwyn is on the right, just after the junction with Sidgwick Avenue.

If approaching from the East or West using the A14, usually the best route is to continue on the A14 until you can join the M11 southbound at junction 14, proceed south to junction 12, and then follow the instructions above.

There is limited parking available at the College. At busy times, such as during open days or graduations, the parking will quickly be taken up and we recommend that you use one of Cambridgeshire County Council's [Park & Ride](#) car parks. The most convenient P&R is at Madingley

Road, accessible from the M11 northbound at junction 13. From there you can take the U-Bus, and alight at the University Library stop on West Road, which is next to Selwyn.

Students are not permitted to keep vehicles at college. Specific arrangements for students/parents dropping off or picking up at the beginning and end of term are communicated in advance, and further assistance is available from the Porters' Lodge or Tutorial Office.

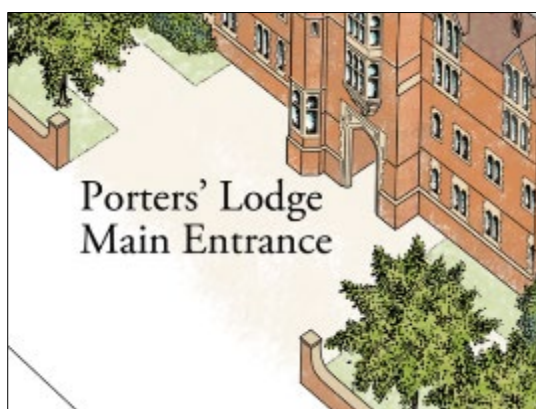
Staff parking is available. This is provided on a first come/first served basis, but there are usually sufficient spaces. Staff can speak to the Porters to request a parking disk.

Visitor parking is available by appointment – please speak to your host. Unauthorised vehicles may be clamped.

There are four main car parks at college:

### Fellows' car park

Located directly in front of the Porters' Lodge entrance, this car park is reserved for College Fellows or visitors by prior arrangement only. **Disabled parking is available here on request.**

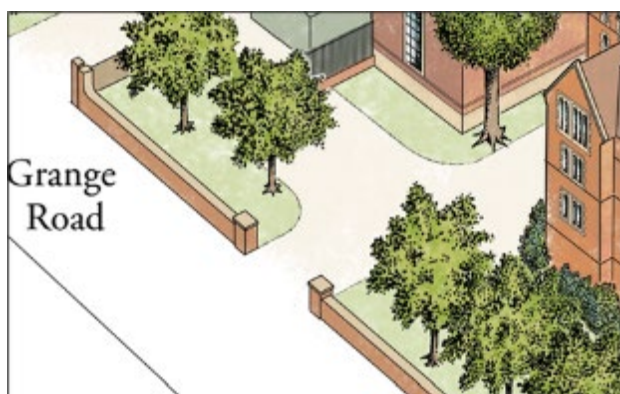


Sat Nav: **CB3 9DQ**  
///what3words: **chip.remit.ruby** ([link](#))

### Old Library car park

Open to visitors, the Old Library car park has step-free access to the [Porters' Lodge](#) and the [Old Library](#) pedestrian entrance. The entrance is accessed via Grange Road. If you are visiting, please speak to your host who can reserve a space for you. There are no dedicated disabled parking bays, and this car park fills up quickly on weekday mornings.

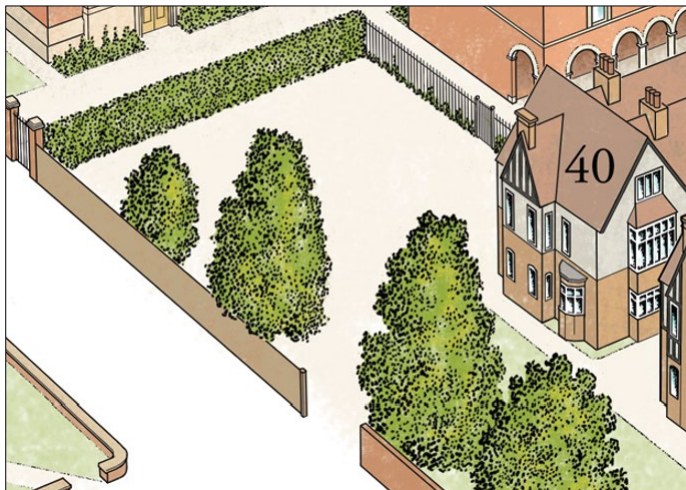
///what3words: **cheese.mash.powder** ([link](#))





## Library and Auditorium car park

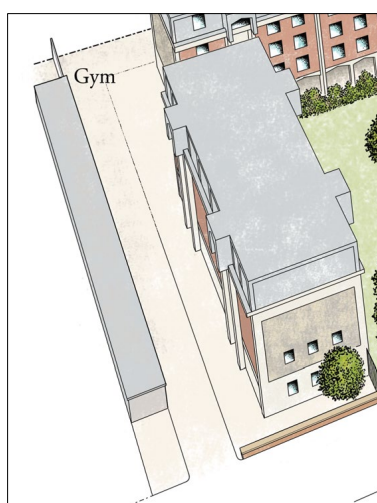
A limited number of parking spaces are available by the Bartlam Library/Quarry Whitehouse Auditorium. Entry is via Grange Road. There is step-free access to [Ann's Court](#) and the [Porters' Lodge](#) (via the [Grange Road footpath](#)). This car park fills up quickly on weekday mornings. Please note that this is a gravel car park.



///what3words: **moss.gent.awards** ([link](#))

## Cripps Court car park

A larger number of parking spaces are available to the rear and side of Cripps court. Entry to the car park is via Cranmer Road, with a separate exit to Grange Road. There is step free access to the Cripps Court entrance (via the [public footpaths](#) on Grange Road and Cranmer Road). The main College site is on the opposite side of Grange Road. There is step free access via dropped kerb at the corner of Grange Road and Cranmer Road. Grange Road does not have a dedicated pedestrian crossing and is busy during peak traffic periods in the morning and afternoon on weekdays. The parking bays to the rear of Cripps have a small lip at their back edge (shown in the image below), which may be an obstacle for some wheelchair users.



///What3words (Cranmer Road entrance):

**desire.proud.froth** ([link](#))

///What3words (Grange Road exit):

**lists.front.good** ([link](#))

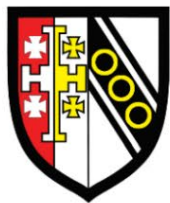
## Arriving by bike

College bike racks are located outside the [entrance to the Porters' Lodge](#) and in the [gravel car park by the Library/Quarry Whitehouse Auditorium](#). Secure (key access) bike sheds are located next to the [Old Library](#), to the rear of Cripps Court and by the [Ramsay Murray Gate](#).

Nearby public bike racks are available on Sidgwick Avenue (opposite the entrance to Newnham College) and throughout the [University Sidgwick Site](#). The full list of cycle parking locations throughout the University can be found on the [University map](#).



# Map of the College



**SELWYN COLLEGE**  
 CAMBRIDGE CB3 9DQ

©2022 Selwyn College (under licence). Drawn by Jeremy Bays, [www.art-work-shop.co.uk](http://www.art-work-shop.co.uk)

# Entrances

## Main entrance - The Porters' Lodge

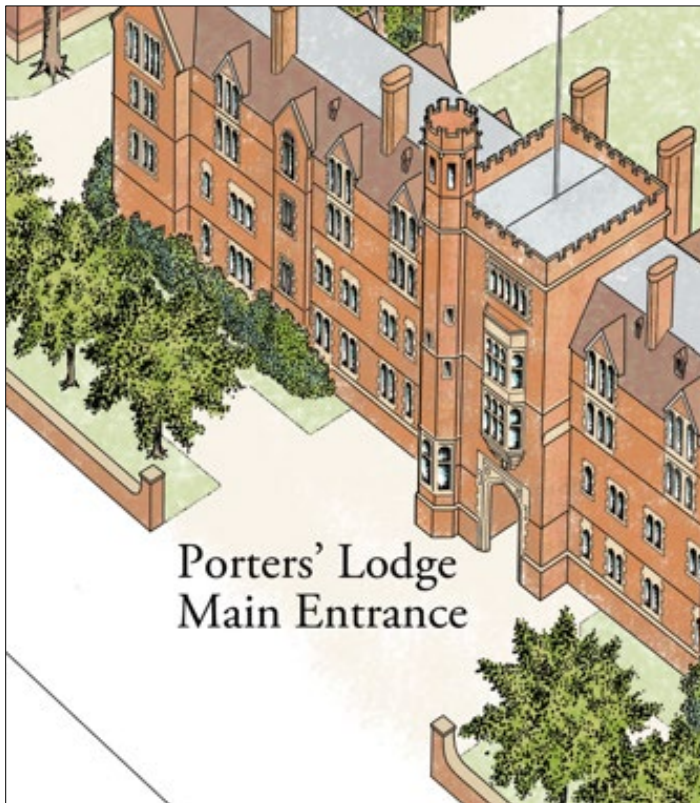
The arch by the Porters' Lodge is the main entrance to the College, and visitors are asked to report to the Porters' Lodge on arrival.

The main gates are open between 6.00am and 8.00pm each day (times may vary). When the gate is closed, access is through a narrower, **stepped** door through the main gate. College members can access this door with a late key. Assistance is available from the Porters by ringing the doorbell located on the wall immediately to the left of the main gate. This doorbell is at a height of 90cm.

Beyond the main gate, there is [stepped access](#) to the Porters' Lodge from under the covered archway, and [step-free access](#) through the archway to the rear. More detailed accessibility information is available in the [Porters' Lodge](#) section further down this document.

The Porters are available to provide assistance 24 hours per day, 365 days per year:

**Tel:** (+44) (0) 1223 335846  
**Email:** [porters@sel.cam.ac.uk](mailto:porters@sel.cam.ac.uk)

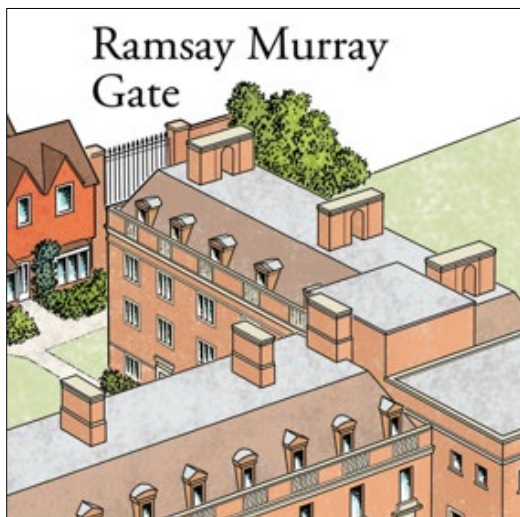




## Other pedestrian entrances

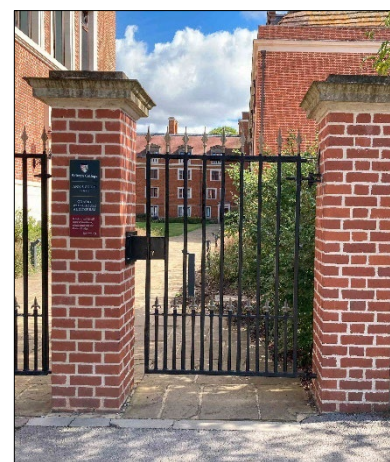
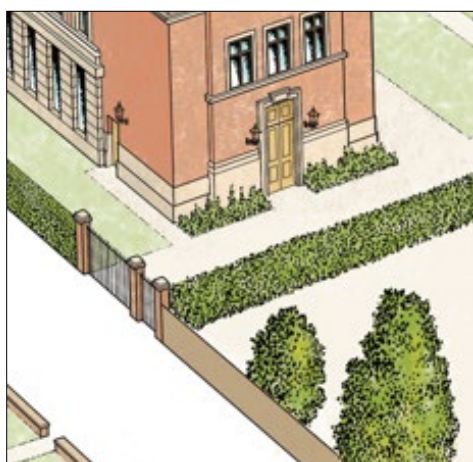
### Ramsay Murray Gate

Pedestrian Access from West Road is via the Ramsay Murray gate. The double width vehicle gates are kept open between the hours of 7.00am and 6.00pm, but times may vary. Out of hours, key-holders can use the adjacent pedestrian gate, which has step-free access and opens to a width of 120cm. This gate opens inwards, has a self-closing mechanism and is heavy, so may be difficult for some users to manage. There is no buzzer or intercom.



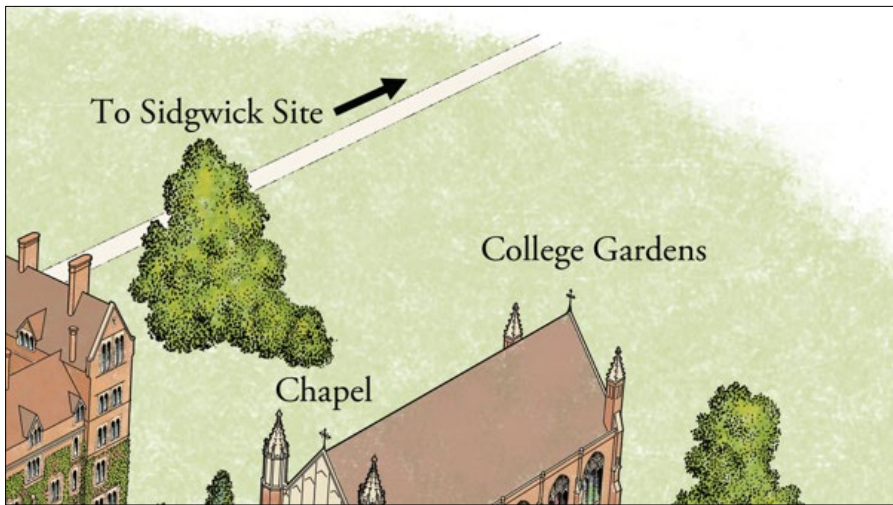
### Grange Road Gate

Pedestrian access from Grange Road to Ann's Court is also available via the gate next to the Library and Auditorium. The double width vehicle gates are kept open from 7.30am to 6.00pm, but times may vary. Key-holders can use the adjacent pedestrian gate, which has step-free access and opens to a width of 100cm. This gate opens inwards, has a self-closing mechanism and is moderately heavy, so may be difficult for some users to manage. There is no buzzer or intercom.



## Sidgwick Gate

Pedestrian access from the University's [Sidgwick Site](#) is via the Sidgwick gate. This single-width entrance (100cm) gives step-free access through the Lower Gardens via a tarmac pathway. The Sidgwick gate is generally kept open between the hours of 7.30am and 6.00pm, but times may vary. There is no access out of hours, including for College members. There is no intercom or buzzer.

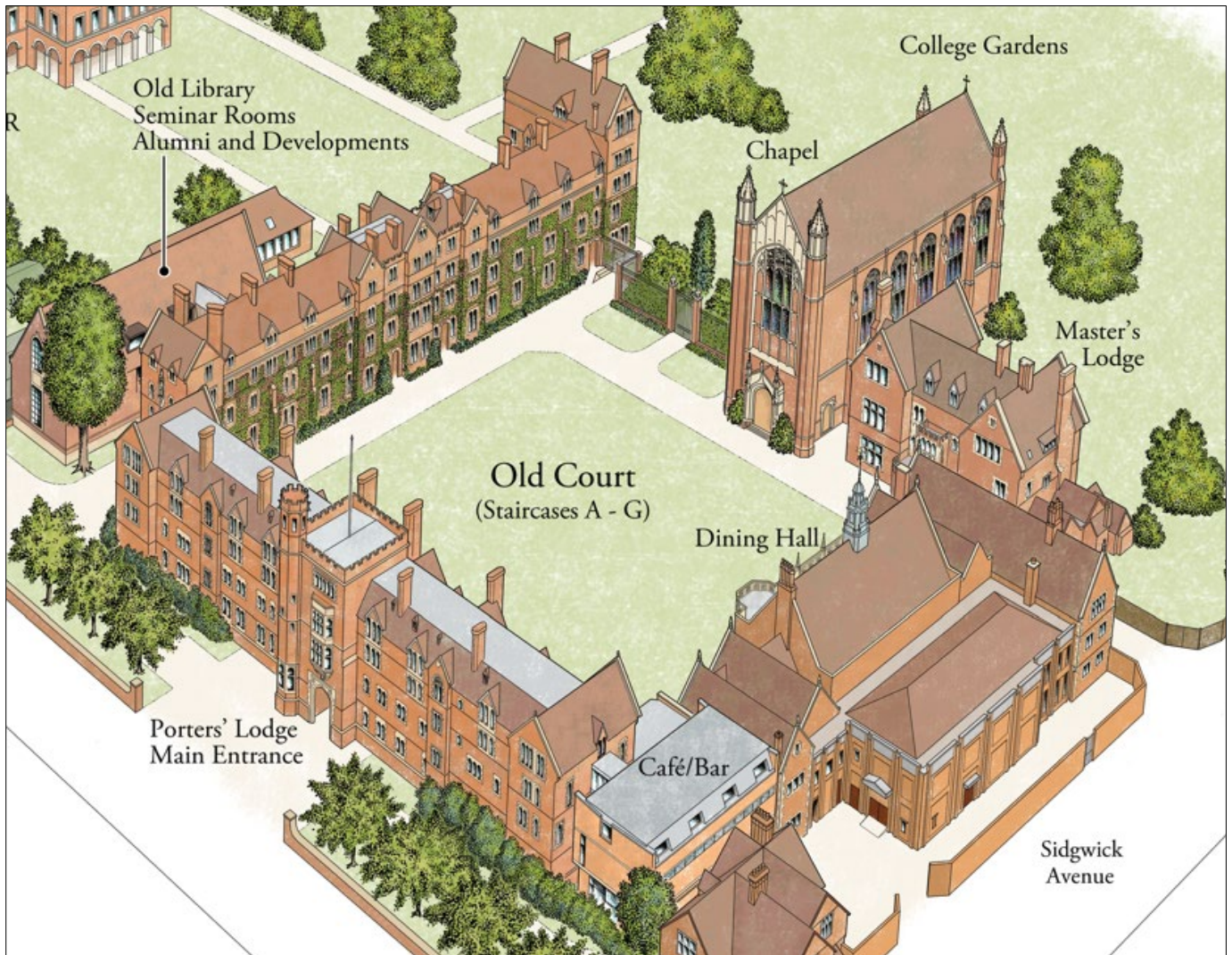




# General layout of the College

The College site comprises three main areas: Old Court, Ann's Court and Cripps Court. The College also owns several large houses (known as 'hostels') within the main site and surrounding area. Hostels are primarily used for postgraduate and guest accommodation, and most are a short distance from the main site.

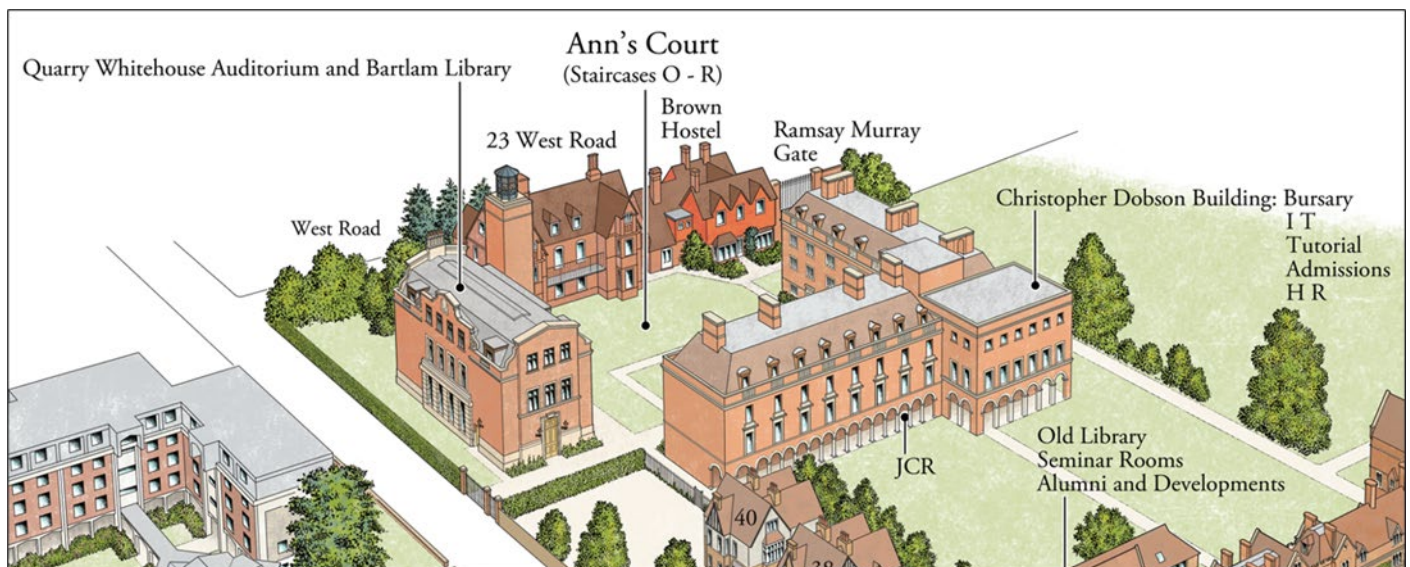
## Old Court



Old Court comprises the College's original buildings, along with some more recent additions. Most of the College's common areas are located in Old Court, including the Chapel, Dining Hall & Servery, Café Bar and assorted meeting rooms. Old Court also contains two wings of student accommodation and Fellows' rooms (located on individually lettered 'Staircases', A-F), as well as the Master's Lodge (where the Head of House lives) and Porters' Lodge. For more detailed information on accessibility arrangements in Old Court, please see the [Old Court](#) section further down this document.

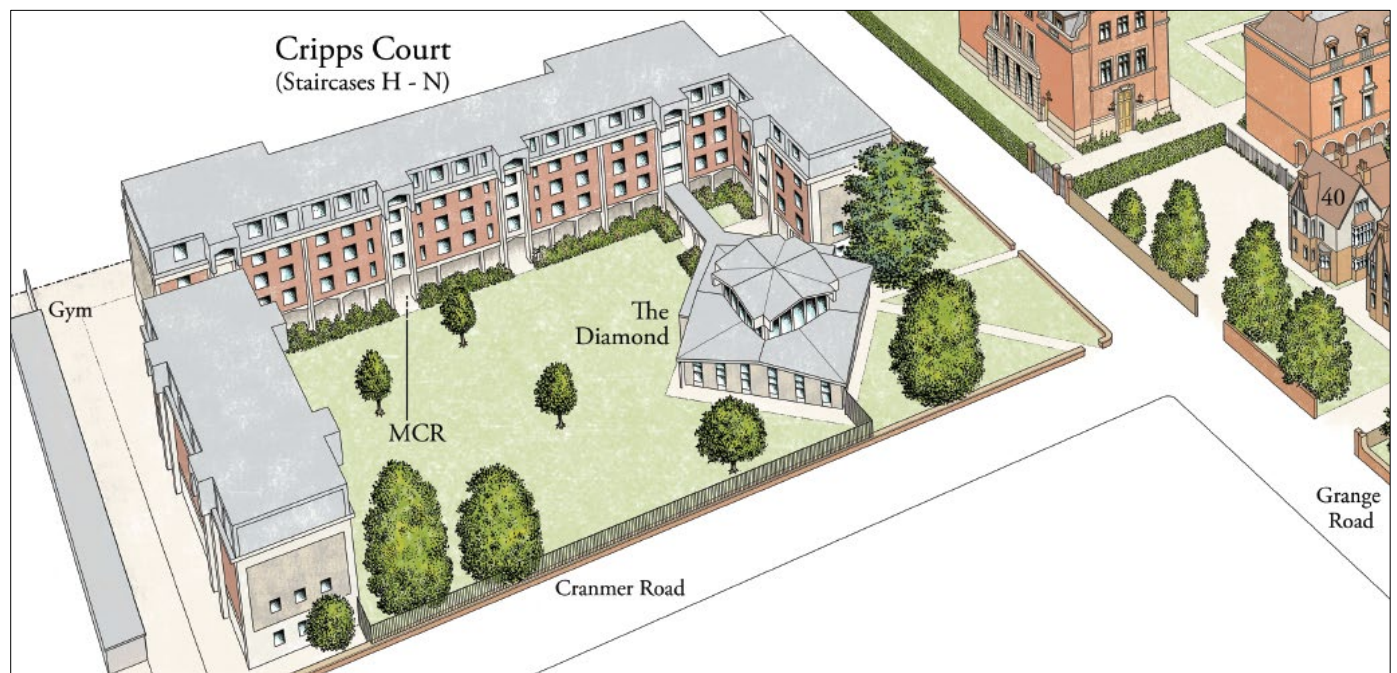


## Ann's Court



Completed in 2005, Ann's Court is adjacent to Old Court on the main college site. It is the most recently built part of the College estate, comprising the [Christopher Dobson Building](#) (housing the College's administrative offices), [Quarry Whitehouse Auditorium](#) and [Bartlam Library](#) (opened in 2021), two wings of student/guest accommodation (on staircases O-R) and the [Junior Combination Room](#) (JCR). For more detailed information on accessibility arrangements in Ann's Court, please see the [Ann's Court](#) section further down this document.

## Cripps Court

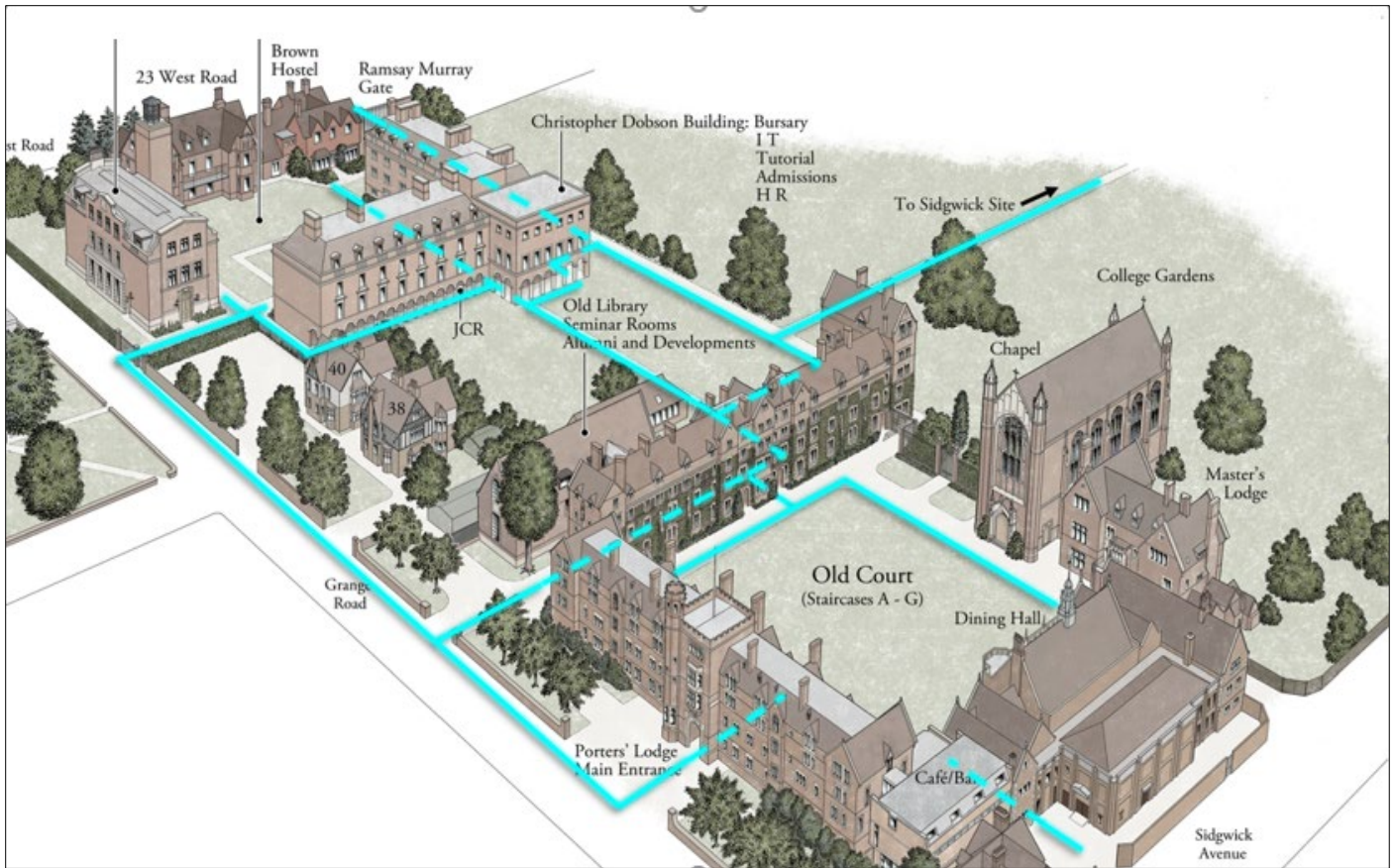


Opened in the 1960s and refurbished in the 1990s, Cripps Court is mostly made up of student/guest accommodation and Fellows' rooms/offices (staircases H-N), as well as [the Diamond](#) (an events space), the [Gym](#) and the [Middle Combination Room](#) (MCR). Cripps court is on the other side of Grange road from the main college site, directly opposite Ann's Court. For more detailed information on accessibility arrangements in Cripps, please see the [Cripps Court](#) section further down this document.



# Accessible routes around College

## Old Court & Ann's Court



Step-free pedestrian entrances and level routes around Old Court and Ann's Court are **highlighted** on the map above. Dashed lines represent level, accessible pathways obscured by the buildings as depicted here.

There are two level routes for moving between Old Court and Ann's Court:

### 1. Via the covered passageway at E-staircase:

In most cases, this will be the quickest and most convenient route, with 24-hour gate-free access. On the Old Court side, there is a gentle incline up to double doors. These doors open to a width of 100cm, and are generally kept propped open.

The door on the Ann's Court side opens to a width of 80cm. A second portion of the door can be opened to increase the width to 120cm. From this doorway, a permanent ramp leads to the lower-level pathways to [Ann's Court](#), the [Old Library](#) and the [Lower Gardens](#). The ramp is 120cm wide, and has railings on either side at height of 80cm.







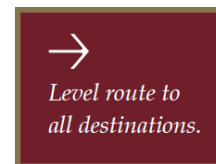
## 2. To the front of the College, from the main entrance at the Porters' Lodge to the [Grange Road Gate](#) via the public footpath on Grange Road:

Please note that the Grange Road Gate (by the Library & Auditorium) is generally locked between the hours of 6.00pm and 7.00am. College members can request key access, but the gate can be heavy and may be difficult to manage for some.



## Wayfinding signage

Wayfinding signage is located throughout Ann's Court and Old Court, with directions for level routes signposted in red (as seen in these examples):



## Pathways



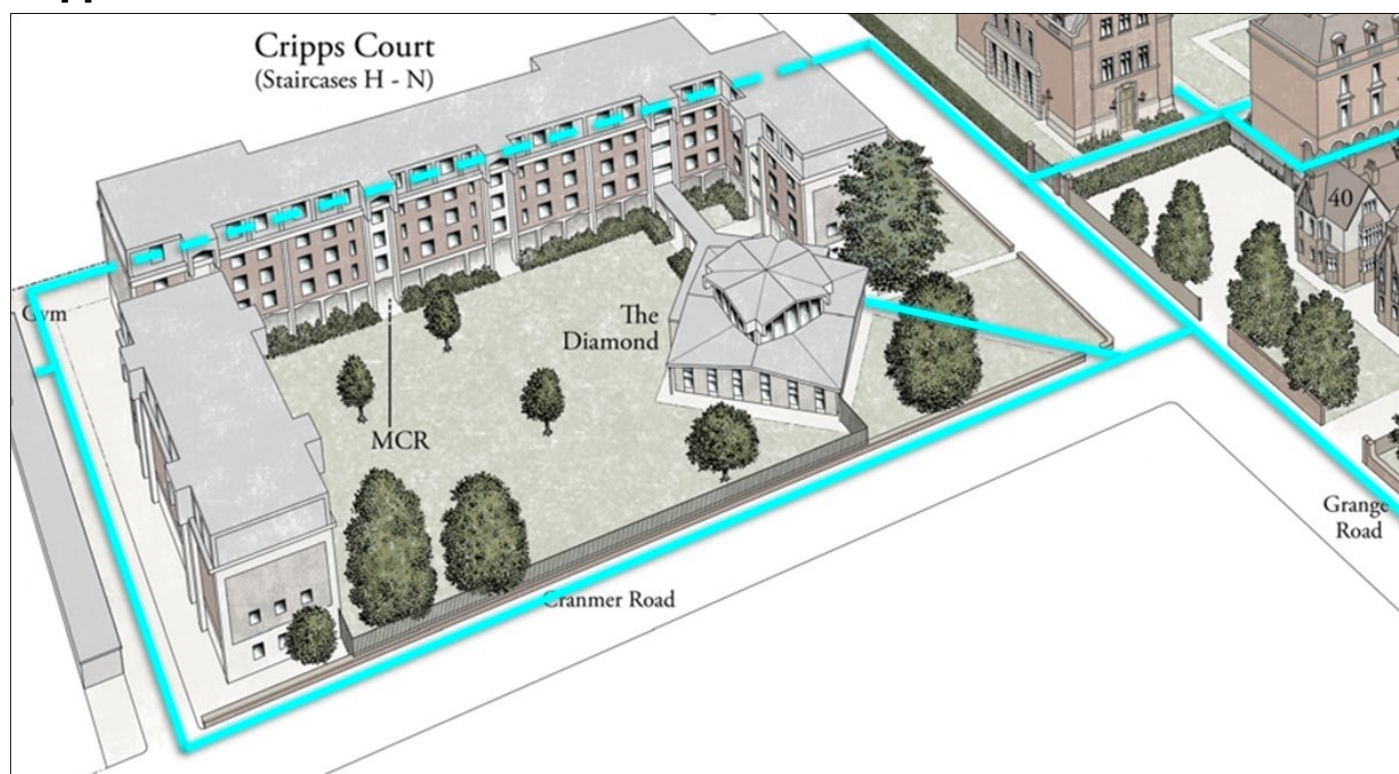
Most of the pathways throughout Old Court and Ann's Court are York stone paving. This is a traditional quarried material, with mortar joints between rectangular slabs of varying sizes. The slabs, while heavily weathered, have a somewhat rough texture with some high spots and indentations. Small pools of water can form during wet weather, but the pathways can be navigated with care. The paving is considered suitable for wheelchair and mobility aid users.

An example of the York stone paving is shown here. Please note the pattern and texture around College may vary, such as in the newer, somewhat rougher sections of paving around the interior of Ann's Court.

Other pathways around College are a mixture of concrete paving, tarmac and gravel.



## Cripps Court



Level pedestrian entrances and routes between the main site and Cripps Court are highlighted on the above map. Dashed lines represent level, accessible pathways obscured by the buildings as depicted here.

Pedestrians moving between the main site and Cripps Court must cross Grange Road.

Step-free access routes, via dropped kerbs on either side of Grange road, are highlighted above. There is no dedicated pedestrian crossing, and Grange Road can get busy during peak traffic hours in early morning or late afternoon.

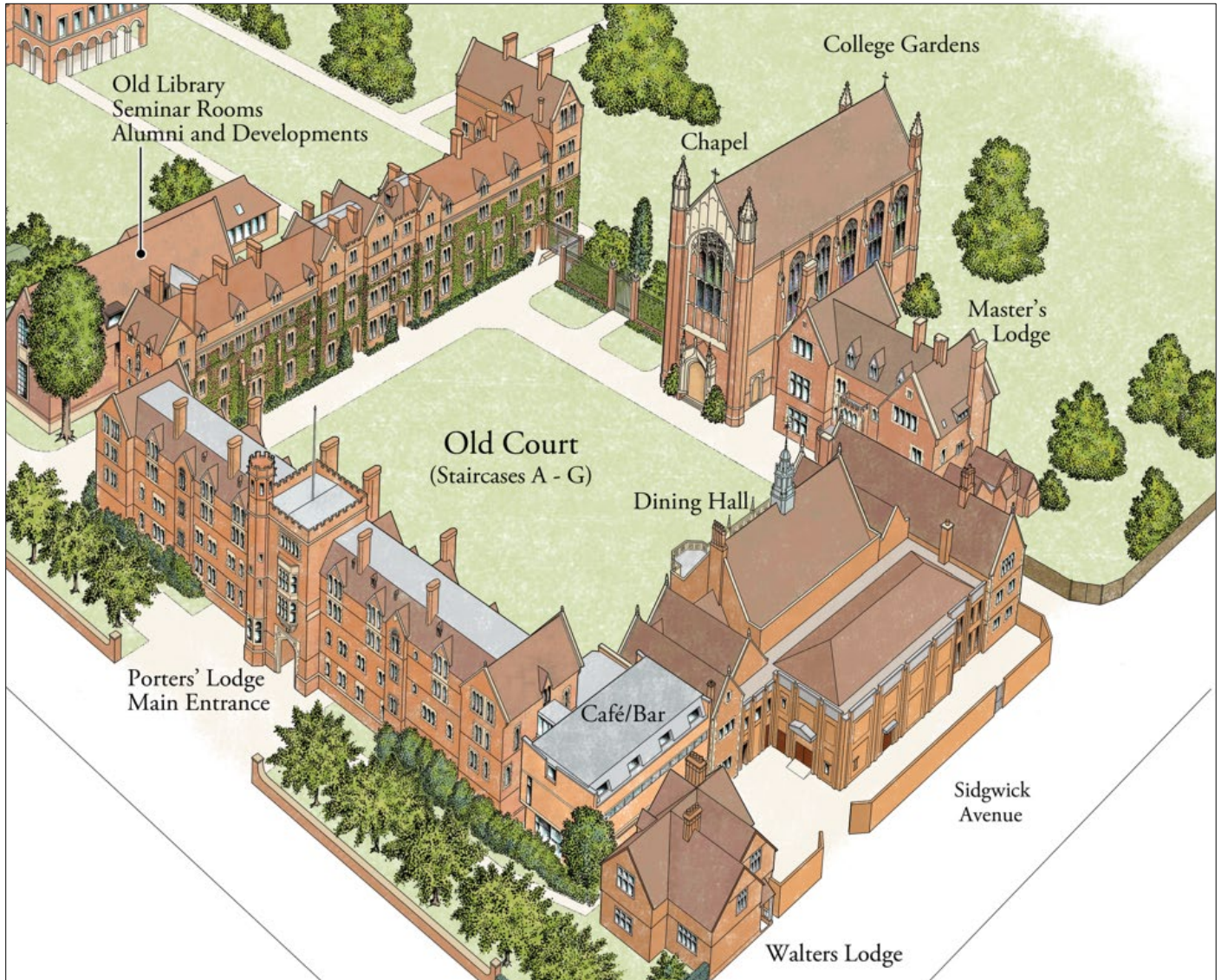
The dropped kerb on the Cripps Court side (at the Corner of Grange road and Cranmer road) is up a short but somewhat steep incline.





# Old Court

Most of the buildings in Old Court were completed at or shortly after the College's founding in 1882. The [Porters Lodge](#), the [Dining Hall](#) and adjoining rooms, the [Café Bar](#), public areas of the [Chapel](#), and most [meeting rooms](#) are fully or partially accessible. However, Old Court's historic listed building status limits accessibility adaptation options, meaning some areas of Old Court are unfortunately not considered accessible to wheelchair or mobility aid users. This specifically includes the [Kathleen Lyttelton](#) room and rooms in the upper floors of in A, B, C, D, E, F and G staircases.





## Porters' Lodge



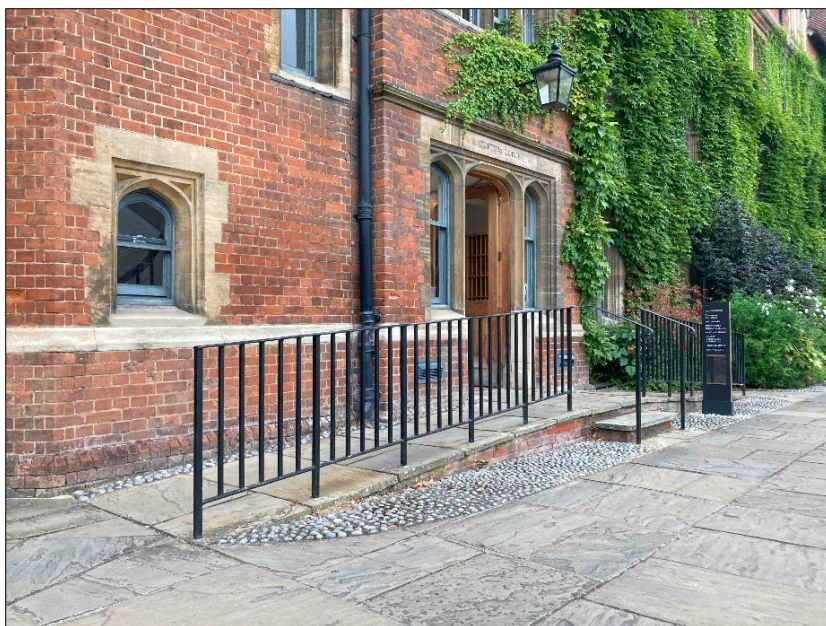
The Porters' Lodge is the main reception and contact point for the College. The Porters, led by the Head Porter and Deputy Head Porter, are responsible for the security of the College estate and the safety of students, Fellows, staff and visitors. The Porters also manage check-in/out for overnight guests, and are responsible for receiving and distributing post and packages. College merchandise can also be purchased at the Porters' Lodge. The Porters are available to answer queries, provide assistance and respond to emergencies 24 hours per day, 365 days per year.

**Duty Porter:** +44 (0) 1223 335846

**Email:** [porters@sel.cam.ac.uk](mailto:porters@sel.cam.ac.uk)

### Accessible entrance

Through the main entrance arch to the inner side of Old Court, there is a ramp for non-stepped access to the Lodge. Dual ramps to the left and right of the entrance are around 95cm wide. Both have a gentle gradient and handrails on the outer side. The ramps lead to a small landing space immediately in front of the entrance door. Two steps also lead to the landing space. The steps are around 15cm high have handrails on either side. The entrance door has a push-down handle (to the left), is lightweight and opens inwards to a width of around 95cm.



### **Front entrance (not accessible)**



There is stepped access to the Porters' Lodge through the entrance to the left under the covered archway. The threshold step is around 15cm high, with a small landing around 25cm depth in front of the entrance door. This entrance door has a push-down handle, located on the left side of the door 90cm from the floor. The door is light and opens inwards to a width of around 75cm.

### **Reception area/front desk**

The front desk is located immediately to the left inside the front entrance door, and is around 5m directly in front of the accessible rear entrance door. The reception counter is approximately 110cm high and does not have a lowered section. There is a lowered shelf/desk immediately opposite the reception desk. The reception area is continually staffed, but there is a bell on the counter top for attracting the Porters' attention if needed. There is unobstructed, step free access (vinyl flooring) inside the Porters Lodge. Space is somewhat limited immediately inside the front entrance, especially during busy periods, but there is ample manoeuvring space in the wider walkway between the reception and the rear (accessible) entrance.

### **Toilets**

There are no toilet facilities in the Porters' Lodge.

The nearest [accessible toilets](#) are located at by the accessible entrance to the Dining Hall/Harrison Room/Old SCR.

Standard toilets are available at the same location.

### **Hearing and visual impairments**

The Porters' Lodge is equipped with a hearing loop and visual fire alarm system.



## Dining Hall & Servery

The Dining Hall and Servery are the location of College's main catering and hospitality functions. Overseen by the [Head of Catering](#), [College Butler](#) and Front-of-House team, the Dining Hall has seating for around 180 people. The layout typically consists of three sets of adjoining tables extending the length of the room. High Table, on a raised platform at the end of the room, is reserved for College Fellows and their guests.

Students, Fellows, staff and visitors eat in the hall during daily mealtimes. The Hall also hosts formal dinners and events throughout the year.

### Main Dining Hall



The Dining Hall is to the right of the [main entrance](#), with one door around 1m from the main entrance and a second door around 3m from the entrance – these are both double width, step free entrances. These doors are generally propped open during opening hours in the warmer months. When closed, they are moderately heavy and open both either outwards or inwards.

There is level, step free access throughout the main dining area, the entrance corridor and the adjoining Servery. The surface is wooden flooring. There is manoeuvring space for wheelchairs throughout the Hall/Servery and between the tables.

There is stepped access only from the Dining Hall floor to the High Table platform. Wheelchair access to High Table is available via the rear corridor to the Catering department – please speak to a member of the Catering Team, or your host if you are visiting the College.

The Dining Hall table surfaces are 74cm high. An apron below the surface of the tables means recessed clearance is around 60cm from the floor, which may be insufficient to accommodate some wheelchairs. There is an apron-free section the end of each row of tables that is set aside for wheelchair users.

With the exception of a small balcony terrace up a narrow flight of stairs, the College's dining areas are accessible throughout.



## Borradaile Room



The Borradaile Room is a smaller, separate dining room, which often serves as overflow space for the main Dining Hall. The door to the Borradaile Room is immediately to the left when entering the Hall/Servery via the main entrance steps, and directly opposite the righthand entry door to the dining hall. Double doors open to a width of the 140cm. The right-hand door has a push down handle and opens to a width of 70cm, and is typically propped open during service. The left-hand door is typically kept locked during service, but staff will be on hand to open it if needed. There is a lip of approximately 1.5cm at the threshold. A mix of square and circular tables are arranged to accommodate small

groups of 4-6 diners. The tables and chairs are not fixed other than a long bench seat along one wall. The tables are at a height of 75cm, with recesses that are suitable for wheelchair users. During busy lunch and dinner periods, the Borradaile Room will be quieter than the main dining hall and so may be a more comfortable option for those with hearing difficulties or sensory processing challenges.

## Servery

The main entrance to the servery directly faces the entrance doors from Old Court. All counters are at a height of 90cm. The main serving station is staffed during meal times, when a member of the Catering team will serve and plate-up main and side dishes. The salad bar, cold/dessert counters, cutlery counter and drinks/snacks fridges are self-service, and some items may be difficult to reach for wheelchair users or those with mobility issues, in which case the Catering staff will be more than happy to give assistance. The servery is spacious and well-lit throughout. The till is staffed at all times during opening hours, and card payment terminals are wireless and can

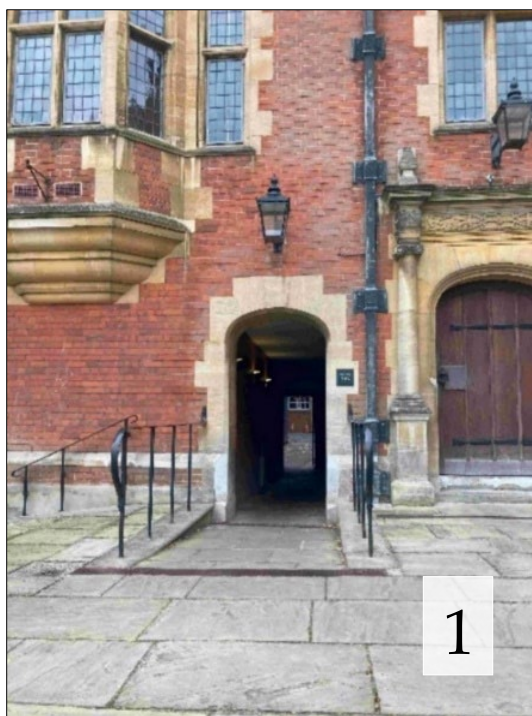
be held at a convenient height (the servery is card payment only). A separate meal card system is in operation for College members. Catering staff are present in the servery at all times during opening hours and will happily provide assistance.





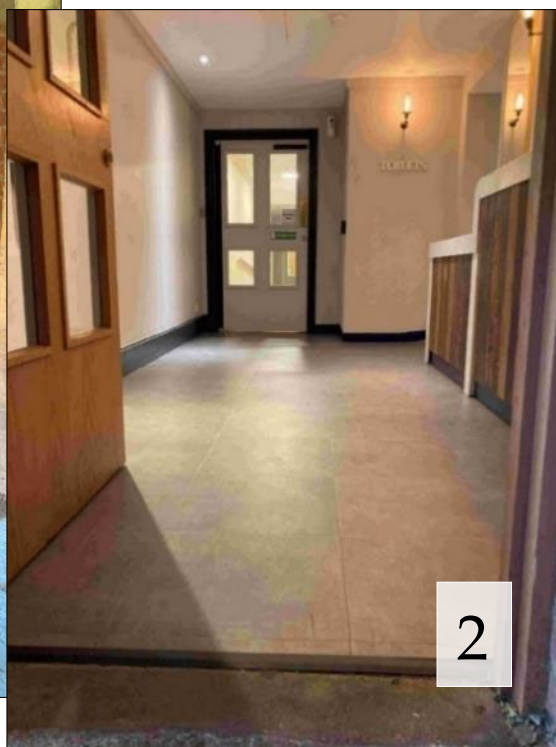
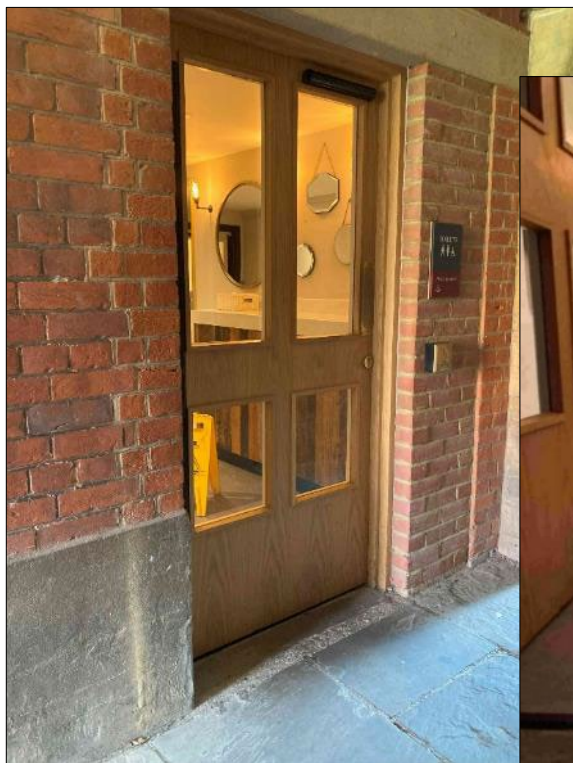
## Accessible entrance

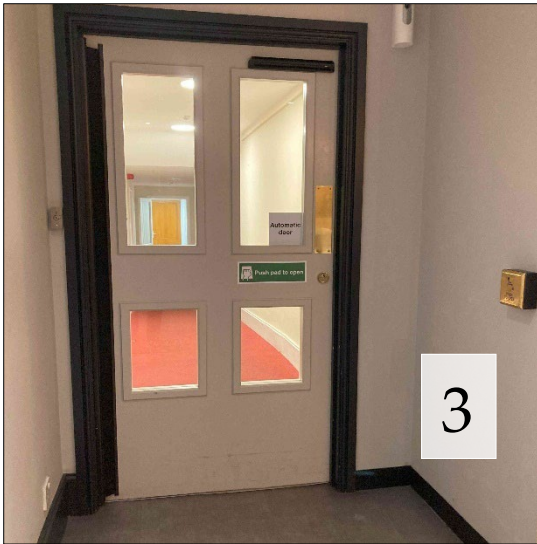
The accessible entrance to the Dining Hall & Servery is via the covered pathway that leads from Old Court to the Kitchen Yard.



**1.** This passageway is step free and slopes gently downwards from Old Court to the Kitchen Yard. Handrails line the pathway on the approach to the entry arch. The entry arch has a width of 110cm.

**2.** Approached from the direction of Old Court, the accessible access door is the 2nd door on the left, around midway along the passageway. This is a push pad entry door, which opens inwards to a width of 100cm. The push pad is on the wall to the right of the door, at a height of 100cm. There is a small lip at the threshold. The push pad on exiting from this door is on the wall to the right of the door, at a height of 100cm.





**3.** Directly ahead, a 2<sup>nd</sup> push pad entry door leads to an interior corridor. The push pad entry button for this door is on the wall to the right, at a height of approximately 100cm. This door opens inwards to a width of 95cm. There is a small lip at the threshold.



**4.** Beyond this door, the corridor has an initial flat section, before sloping downwards. The gradient of this slope is gentle, and there are handrails on either side. The width of the corridor is approximately 150cm.

The slope flattens towards the end of the corridor.



**5.** To the right at the end of corridor, a platform lift gives access to a raised landing, which in turn gives access to the main passenger lift and an accessible toilet. The call button for the platform is on the wall to the right of the lift entrance. The call button is 103cm from the floor. The opening to the platform lift is 90cm wide. There is a short ramp at the lip of the platform, which is steep and may prove difficult for some users.

The lift control buttons are on the left. The up/down control buttons must be held down to operate the lift. There is a separate exit to the platform lift, meaning wheelchair or mobility aid users will not have to reverse on exit. The exit door will open automatically when the platform arrives at the upper level. The lift has an activation and arrival alarm notification. The platform lift does not require staff assistance to operate. A pull chord emergency alarm can be used to call for assistance.





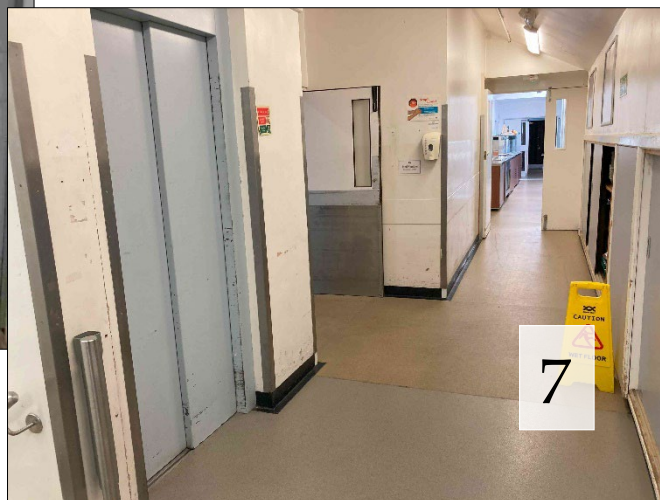
**6.** The exit from the platform lift opens directly facing the entrance to the passenger lift to the 1st Floor.

The lift controls are on the left, at a height of approximately 100cm from the floor. The lift doors open to a width of 80cm, and the inner dimensions of the lift are approximately 125cm by 125cm. There is no separate exit from the lift on the 1st floor, meaning wheelchair users will need to reverse when either entering or exiting the lift. Please note that when lift doors open at the ground floor, a separate set of doors at the rear of the lift will open simultaneously. These rear doors lead to a staff only area of the Catering department – please note this lift is also used as a goods lift by the Catering Department.



**7.** The passenger lift emerges to a rear service corridor within the Catering department. To the right (when facing away from the lift), the corridor leads to the servery (as shown below) and to the Dining Hall beyond. To the left, up a gentle incline, the corridor leads to the Fellows' servery, High Table platform, Old SCR and the Harrison room.

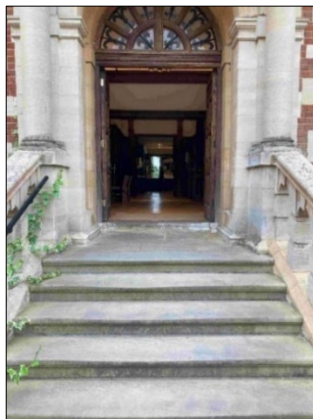
The Catering corridor is generally busy, and staff will be on hand to offer assistance and directions.



### **Main entrance (not accessible)**

The main entrance to the Servery and Dining Hall is via a wide exterior (stone) staircase leading to double width doors to an entrance corridor. The double doors are heavy and may be difficult to open for some users. The doors are usually propped open during the warmer months and kept closed during the colder months.

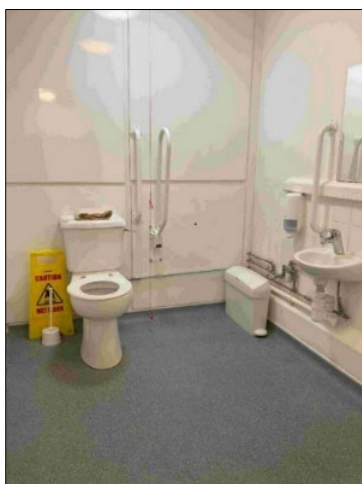
There is no ramp access at this entrance. Two sets of steps (left and right) join at a landing, which leads to 5 further steps ending smaller landing, with one more step up leading to a set of large wooden entrance doors. The steps are 14cm high and 37cm deep. Stone balustrades line either side of the steps, with a handrail on the outside side of the lower steps and to the left of the upper steps. The handrail is at a height of 85cm.



Through the doors, the Servery is located directly in front, around 10m from the door.

### **Special diets & allergies**

The catering team are flexible and able to accommodate most special diets (advance notice may be required in some cases). Halal options are available. The college is committed to food allergen labelling, and catering staff receive training in food allergy awareness. The Head Chef will be happy to discuss any specific dietary requirements. If you are visiting the college and have a food allergy or special dietary needs, please speak to your host who will be able to request the necessary arrangements.



### **Accessible toilets**

The nearest accessible toilets are located on the ground floor, immediately to the left when exiting the passenger lift. The toilet is equipped with grab rails, lateral transfer space and an emergency alarm.

### **Hearing and visual impairments**

The servery is equipped with a hearing loop. The hall gets busy during peak lunch and dinner periods. The chatter from the assembled diners can lead to a somewhat noisy atmosphere, which may prove challenging for those with hearing difficulties or sensory processing challenges. A quieter side room – the Borradaile Room – is open to diners most afternoons and evenings. The Hall is equipped with a visual fire alarm system.



## Café Bar

### Accessible entrance



There is step free entry to the Café Bar from the inner side of Old Court, to the right as you enter through the main archway entrance by the Porters Lodge. This is an automatic door. The push pad entry button is on the wall to the right of the door at around 80cm from the floor. The door opens to a width of approximately 100cm. There is small lip at the entrance threshold.

Immediately to the left, inside the main door, is a small seating area (looking out towards Old Court lawn). To the right of the main entrance, along a short corridor, is another seating area, which can be accessed step free (without the need to use the platform lift).

Straight ahead, a set of three steps lead down to the main bar area. These steps are 15cm high, 35cm deep. There are railings at a height of around 90cm on either side of the steps.

To the right of the entrance, along a short 2.5m walkway, there is a platform lift to/from the lower main bar area. At the upper level, a manual door gate opens outwards to a width of approximately 110cm. There is manoeuvring space in front of the lift door. The call buttons and internal controls are approximately 90cm from the floor, and do not require staff assistance to operate. On reaching the lower level, a separate exit gate emerges into the main bar area, meaning wheelchair users do not have to manoeuvre inside the lift or reverse when exiting. Entering the lift from the lower level, there is a short ramp up to the lift platform.



## **Main bar area**

The main bar area is spacious and level, with wooden flooring throughout. There is ample manoeuvring space and most tables are suitable for wheelchair users. Lighting levels are generally good, and can be adjusted as needed. Music is played in the background, but this is kept to a moderate or low volume, meaning the Bar does not become overly noisy other than during especially busy periods.

The bar counter is around 110cm high, with a lowered, recessed section at the left end. Card payment terminals are wireless and can be held at a convenient height. The Café Bar is counter service only, but staff are on duty at all times during opening hours and will be happy to provide assistance as needed.

## **Special diets & allergies**

The Café/Bar serves a limited range of hot and cold snacks. The college is committed to food allergen labelling, and catering staff receive training in food allergy awareness. Please advise the bar staff if you have food allergies or special dietary requirements.

## **Accessible toilets**

The nearest [accessible toilets](#) are located at the accessible entrance to the Dining Hall/Harrison Room/Old SCR.

**This requires leaving the Bar via main exit.**

Standard toilets are available at the same location. These can also be accessed using the side door on the lower level of the Bar (signposted, step access only).

## **Hearing and visual impairments**

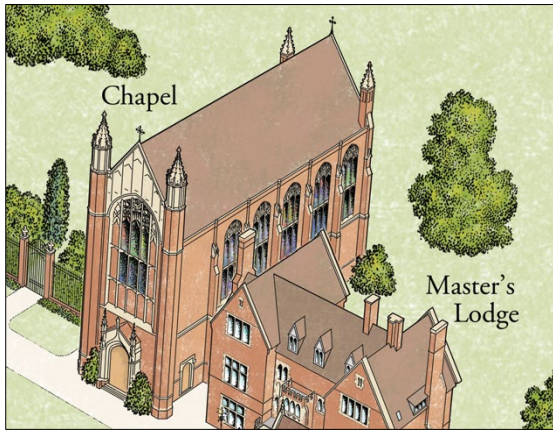
The bar is not equipped with a hearing loop. There is no visual evacuation alarm system in the Bar.



## Chapel

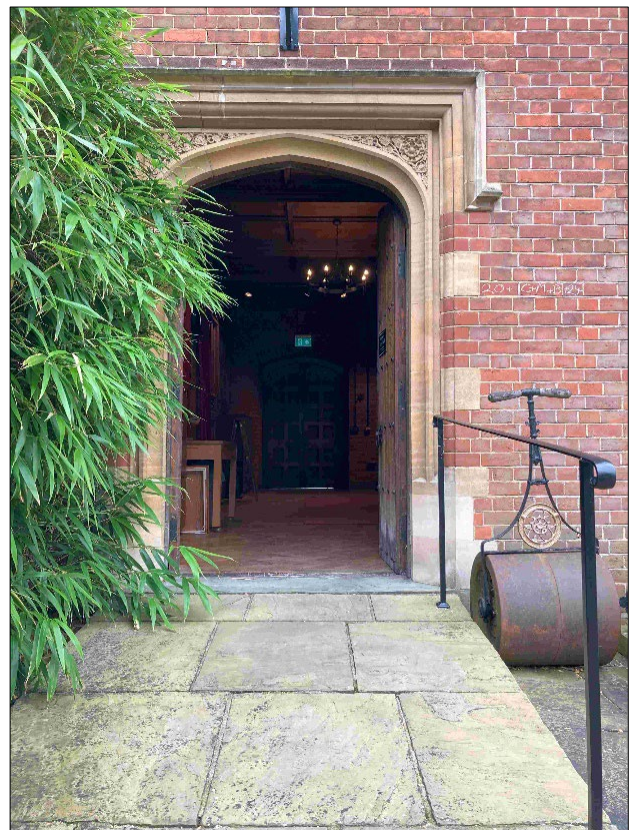
The Chapel is located on the west side of Old Court, directly opposite the Porters' Lodge. Services in Chapel are in the Christian Anglican tradition, and are open to those of all faiths, of none, and of everything in between. The main (non-accessible) entrance doors face the Old Court lawn. Two steps lead up to the doors. These steps are 10-17cm high and 30cm deep. The main entrance doors are used during Chapel services, and are kept locked at most other times.

### Accessible entrance



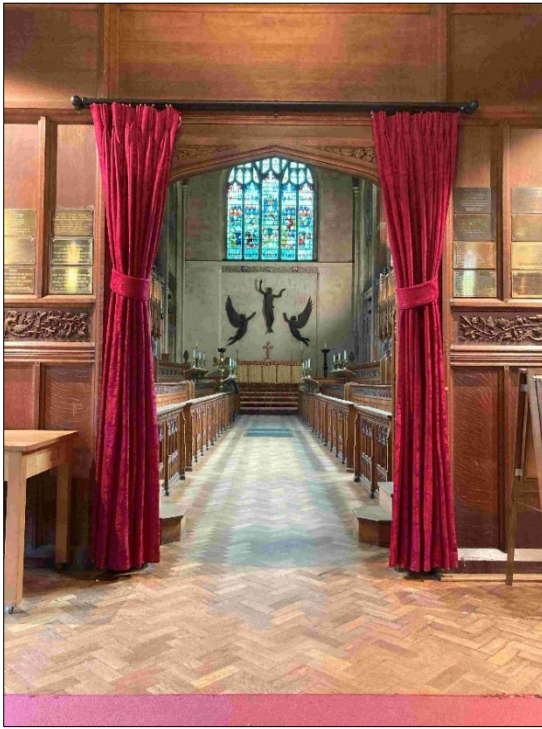
The accessible entrance to the Chapel is located to the left of the main entrance, on the north facing wall.

A short, permanent ramp leads to a small landing in front of the wooden doors. This door has a twist handle and opens outwards to a width of around 60cm. A second door can be opened to create an entry 120cm wide.



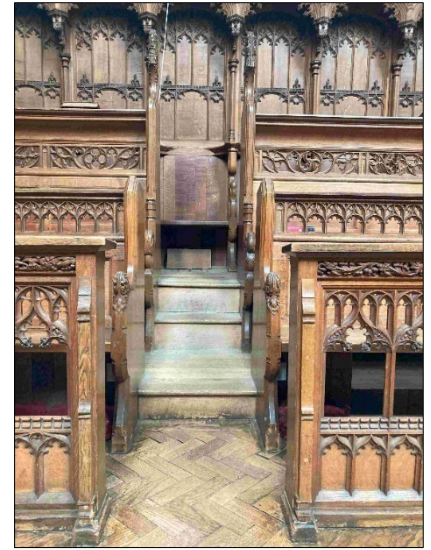
A second (non-accessible) entrance is located around the corner on the south side of the Chapel. This is a stepped entrance, with two low steps leading to double width wooden doors. There is no railing. At most times only the righthand door is unlocked. This door has a twist handle and opens inwards to a width of around 60cm. A second door can be opened to create an entry 120cm wide.





All three entrances lead to the entry narthex, which in turn leads to the wide, step-free entryway to the nave. The entry narthex is level and has ample manoeuvring space for wheelchair and mobility aid users. There is a carpet towards the centre of the narthex, which has a lip of not more than 1cm in height.

The nave is level throughout. Three layers of bench seating line either side of the nave, with stepped access only to the 2nd and 3rd layers. There are three narrow sets of steps for the bench seating on either side of the nave aisle, at the entrance end, in the middle (just before the choir seats) and at the altar end. There are no railings for these steps, but the tops of the benches act as handholds. The canopy stalls on



the 3rd layer of bench seating are typically reserved for College Fellows and their guests. A shelf sits in front of the first layer of bench seating, around 40cm from the edge of the bench.

During Chapel services, a space is set aside on the nave floor for wheelchair users. A member of the Chapel team will be on hand to direct and give advice.



At the end of the nave, four low, deep steps lead to the altar. Each step is around 20cm high. The first two steps are 130cm deep, the 3rd step is around 100cm deep and the 4th step leads to the area immediately in front of the altar. These steps are carpeted throughout. There is no handrail on the steps to the altar.

The seats for the choir are located on the benches towards the middle of the nave, occupying the 1st and 2nd layers of benches. These sections include standing-height music stands for the choir members. These are around

115cm from the floor in front of each bench.

There is no public access to the Organ Loft. The organ loft is step access only.

## Accessible toilets

There are no toilet facilities in the Chapel.

The nearest [accessible toilets](#) are located at by the accessible entrance to the Dining Hall/Harrison Room/Old SCR.

Standard toilets are available at the same location.

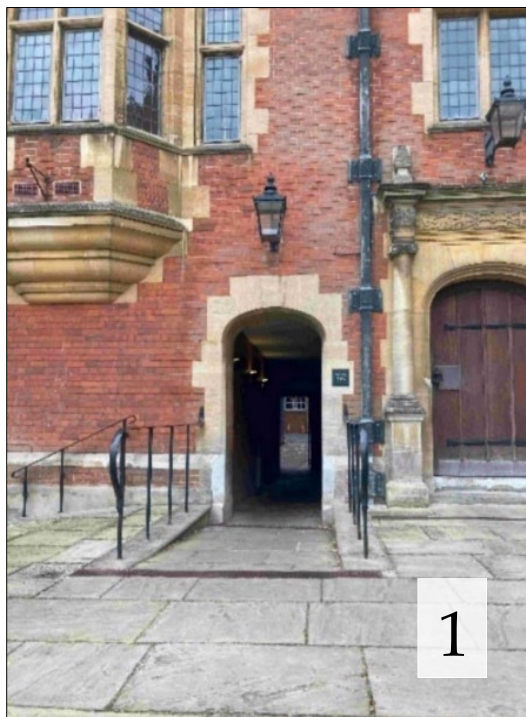
## Common rooms and meeting rooms

### Fellows' Parlour

The Fellows' Parlour is a social space for use by College Fellows, with comfortable seating and drinks/ snacks provided. It is located on the lower ground floor, beneath the Dining Hall.

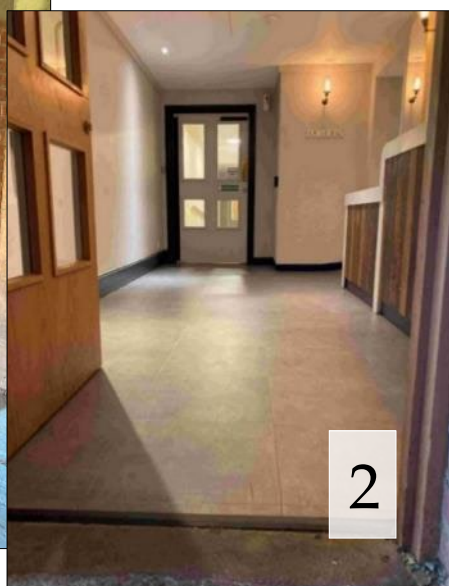
#### Accessible entrance

The accessible entrance to the Fellows' Parlour is via the covered pathway that leads from Old Court to the Kitchen Yard. The entrance to the covered pathway is shown below:



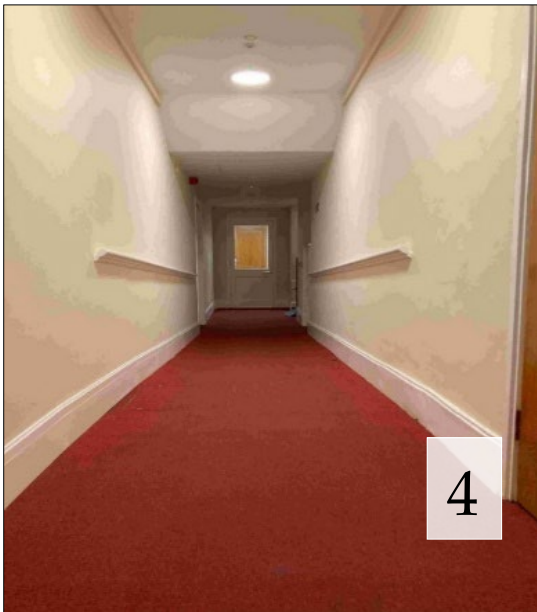
**1.** This passageway is step free and slopes gently downwards from Old Court to the Kitchen Yard. Handrails line the pathway on the approach to the entry arch. The entry arch has a width of 110cm.

**2.** Approached from the direction of Old Court, the accessible access door is the 2nd door on the left, around midway along the passageway. This is a push pad entry door, which opens inwards to a width of 100cm. The push pad is on the wall to the right of the door, at a height of 100cm. There is a small lip at the threshold. The push pad on exiting from this door is on the wall to the right of the door, at a height of 100cm.





**3.** Directly ahead, a 2nd push pad entry door leads to an interior corridor. The push pad entry button for this door is on the wall to the right, at a height of approximately 100cm. This door opens inwards to a width of 95cm. There is a small lip at the threshold.



**4.** Beyond this door, the corridor has an initial flat section, before sloping downwards. The gradient of this slope is gentle, and there are handrails on either side. The width of the corridor is approximately 150cm.



**5.** The slope flattens out to a landing. The entrance door to the Parlour is at the foot of the slope, on the left. The door opens inwards to a width of 80cm. This is not an automated door. There is a push down handle at 103cm from the floor. The door is spring mounted and is somewhat heavy. There is a wooden lip/threshold bar of around 1cm in height. The door is not typically locked. Where necessary, it can be unlocked with a Fellows' key.



### Front entrance (non-accessible)

A set of stone steps lead down from Old Court. There are three steps. Each is 15 cm in height, leading to a small landing in front of the door. The door opens outwards to a width of around 95cm. This door is key access only, and moderately heavy. There is a small lip at the threshold.



The entrance door leads to an anteroom, with a table and chairs and a computer desk on the side wall. The computer desk is not suitable for wheelchair users. To the left of the entrance, a throughway (approx. 75cm in width) leads to two 15cm steps down to the main social space.

Other than a raised seating area by the window looking out to Old Court, which is stepped access only, the main social space is level throughout, and is furnished with comfortable armchairs and coffee tables. The flooring is wooden, with two large area rugs towards the centre of the room. The lip of these rugs is not more than 1cm in height. There is

manoeuvring space around the edge and throughout most of the room. In some areas of the room the furniture may create an obstruction, but the furniture is not fixed and can be moved to accommodate wheelchair/mobility aid users as necessary.

Along one wall is a counter with tea & coffee facilities. The counter is approximately 90cm in height. The touch screen controls for the coffee machine are around approximately 140cm from the floor.

### Accessible toilets

The most convenient [accessible toilets](#) are located at the top of the ramp to the right when exiting the accessible entrance to the Parlour. The toilets are located at the rear of the entrance foyer, to the left when approached from the Parlour. The accessible toilet is equipped with grab rails, lateral transfer space and an emergency alarm.

A second accessible toilet is located on the raised landing immediately in front of the accessible door to the Parlour. This can be accessed using the platform lift or nearby steps.

### Hearing and visual impairments

The Fellows' Parlour is not equipped with a hearing loop. There is no visual evacuation alarm system in the Fellows' Parlour.

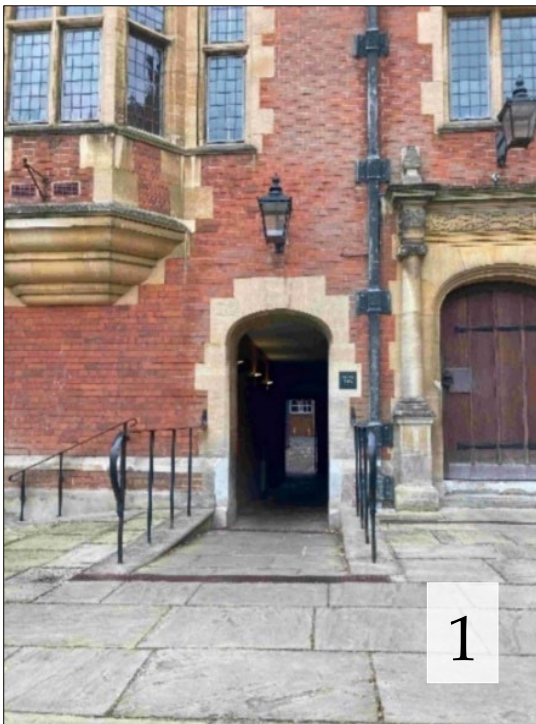
## Harrison Room



The Harrison Room is large meeting, dining and events space located on the 1<sup>st</sup> Floor, directly above the Bar. The room has a wooden floor and is level throughout. A large rug occupies the middle of the floor space. The edge of this rug creates a lip of around 1cm in height. The furniture is not fixed and the layout of the room changes depending on use, but the size of the room allows for ample manoeuvring space for wheelchair users.

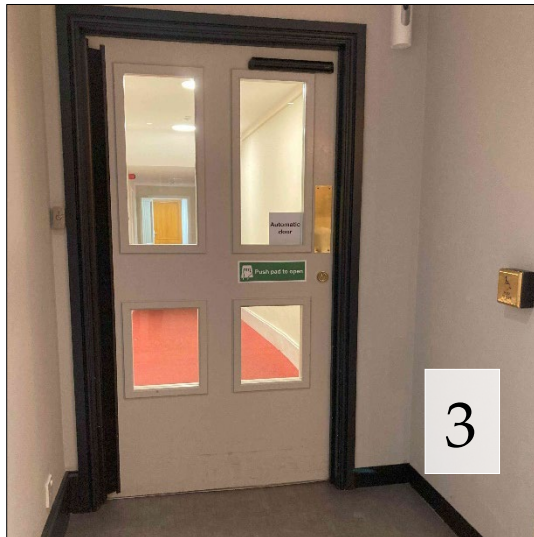
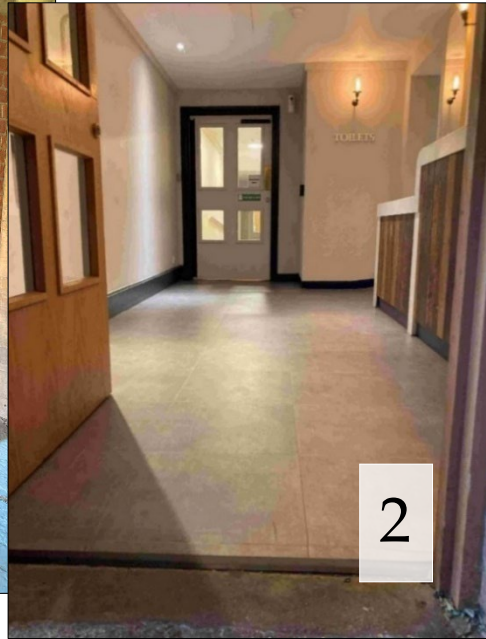
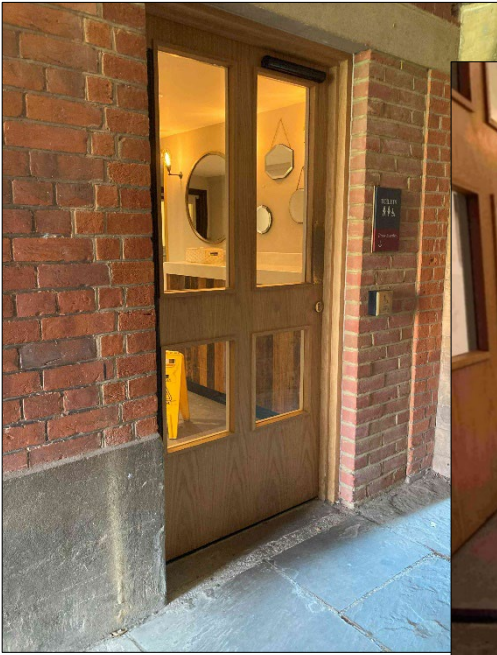
## Accessible entrance

The accessible entrance to the Harrison Room is via the covered pathway that leads from Old Court to the Kitchen Yard. The entrance to the covered pathway is shown below:



**1.** This passageway is step free and slopes gently downwards from Old Court to the Kitchen Yard. Handrails line the pathway on the approach to the entry arch. The entry arch has a width of 110cm.

**2.** Approached from the direction of Old Court, the accessible access door is the 2<sup>nd</sup> door on the left, around midway along the passageway. This is a push pad entry door, which opens inwards to a width of 100cm. The push pad is on the wall to the right of the door, at a height of 100cm. There is a small lip at the threshold. The push pad on exiting from this door is on the wall to the right of the door, at a height of 100cm.



**3.** Directly ahead, a 2nd push pad entry door leads to an interior corridor. The push pad entry button for this door is on the wall to the right, at a height of approximately 100cm. This door opens inwards to a width of 95cm. There is a small lip at the threshold.



**4.** Beyond this door, the corridor has an initial flat section, before sloping downwards. The gradient of this slope is gentle, and there are handrails on either side. The width of the corridor is approximately 150cm.

The slope flattens towards the end of the corridor.





**5.** To the right at the end of corridor, a platform lift gives access to a raised landing, which in turn gives access to the main passenger lift and an accessible toilet. The call button for the platform is on the wall to the right of the lift entrance. The call button is 103cm from the floor. The opening to the platform lift is 90cm wide. There is a short ramp at the lip of the platform, which is somewhat steep and may prove difficult for some users.

The lift control buttons are on the left. **The up/down control buttons must be held down to operate the lift.** There is a separate exit to the platform lift, meaning wheelchair or mobility aid users will not have to reverse on exit. The exit door will open automatically when the platform arrives at the upper level. The lift has an activation and arrival alarm notification. The platform lift does not require staff assistance to operate. A pull chord emergency alarm can be used to call for assistance.



**6.** The exit from the platform lift opens directly facing the entrance to the passenger lift to the 1<sup>st</sup> Floor.

The lift controls are on the left, at a height of approximately 100cm from the floor. The lift doors open to a width of 80cm, and the inner dimensions of the lift are approximately 125cm by 125cm. There is no separate exit from the lift on the 1st floor, meaning wheelchair users will need to reverse when either entering or exiting the lift. Please note that when lift doors open at the ground floor, a separate set of doors at the rear of the lift will open simultaneously. These rear doors lead to a staff only area of the Catering department – please note this lift is also used as a goods lift by the Catering Department.

**7.** The passenger lift emerges to a rear service corridor within the Catering department. To the left, up a gentle incline, the corridor leads to the Fellows' servery, and to the entrance to the Harrison Room beyond. The corridor approaching the Harrison Room is approximately 170cm wide. Double entry doors open to a width of approximately 120cm. The doors open outwards and are moderately heavy. The D-type door handle for each door is approximately 100cm from the floor.

The Catering corridor is generally busy, and staff will be on hand to offer assistance and directions.



### Front entrance (non-accessible)

Stepped access to the Harrison Room from Old Court is via the large wooden door located immediately to the left of the Bar.



There is a single low step to the area in front of the door. The door has a twist handle (on the left of the door) approximately 120cm from the floor. The door is not automated, is not spring loaded and is very heavy.

There is an immediate step up to the threshold and the small entrance foyer beyond. Directly opposite the entrance, there is a wide staircase leading up the first floor. There are 9 steps (15cm high by 30cm deep) to

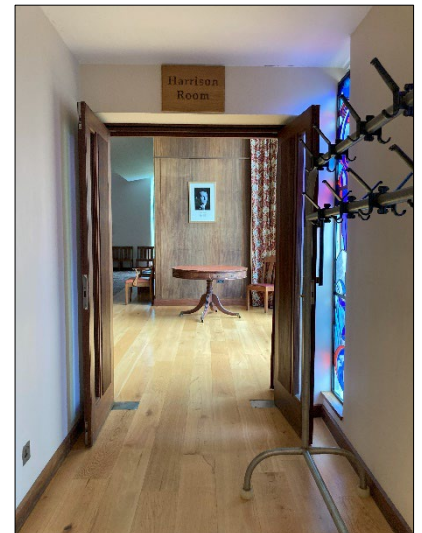
the landing. To the right of the landing, the stairs double back 180 degrees, with a further 9 steps to the 1st floor corridor. The staircase is wide and has a railing on the right-hand side.

To the left at the top of the stairs, a short corridor leads to double entry doors to Harrison Room. The corridor is approximately 170cm wide. Double entry doors open to a width of approximately 120cm. The doors open outwards and are moderately heavy. The D-type door handle for each door is approximately 100cm from the floor.

### Accessible toilets

The nearest accessible toilets are located on the ground floor, immediately to the left when exiting the [passenger lift](#). The toilet is equipped with grab rails, lateral transfer space and an emergency alarm.

Standard female toilets are located just outside the entrance to the Harrison Room (near the top of the stairs). Standard male toilets are located off the stairway landing.



### Hearing and visual impairments

Harrison room is not equipped with a hearing loop. There is no visual evacuation alarm system in the Harrison Room.



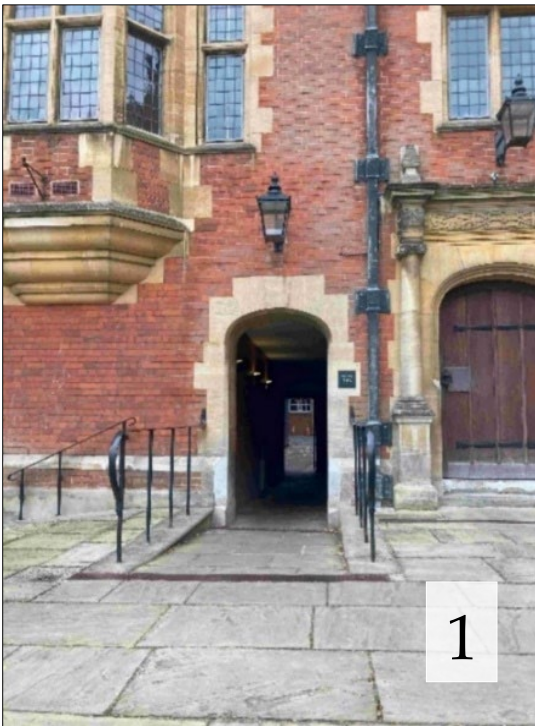
## Old SCR



The Old SCR is dining and meeting space, located in a room immediately behind the Fellows' High Table in the main Dining Hall. The room features a large table in the centre of the room, with seating for around 10 people. The table and chairs sit on an area rug. The edge of this rug creates a lip of around 1cm in height. The table surface is 75cm high. An apron below the surface of the table leaves recessed clearance of around 60cm, which may be insufficient to accommodate some wheelchair users.

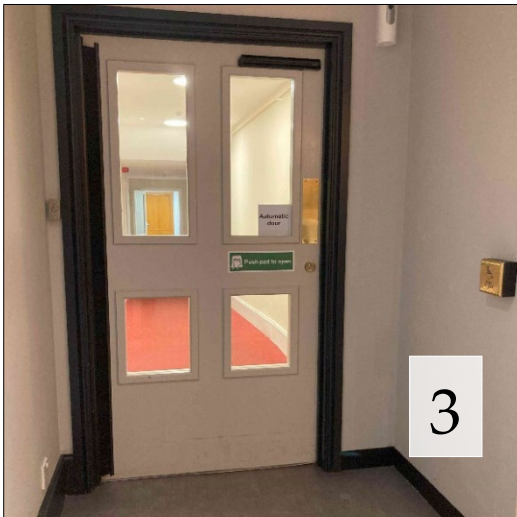
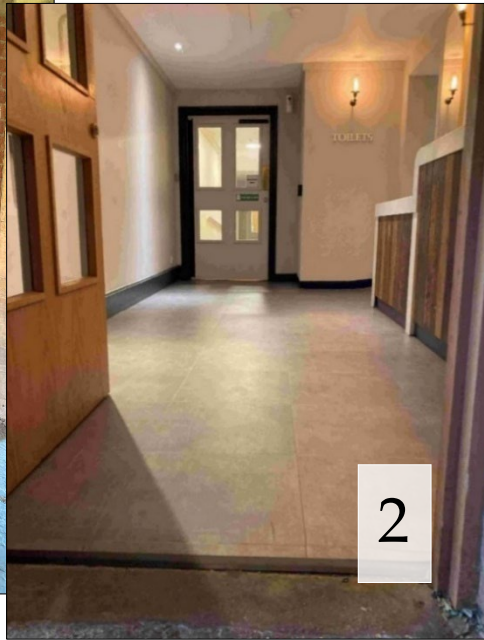
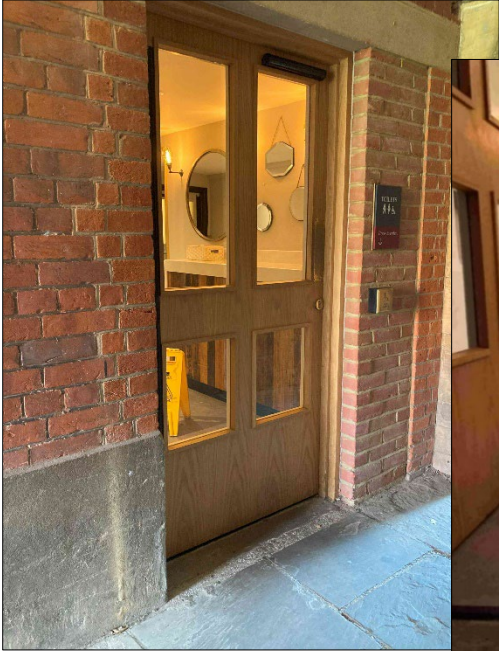
## Accessible entrance

The accessible entrance to the Old SCR is via the covered pathway that leads from Old Court to the Kitchen Yard. The entrance to the covered pathway is shown below:

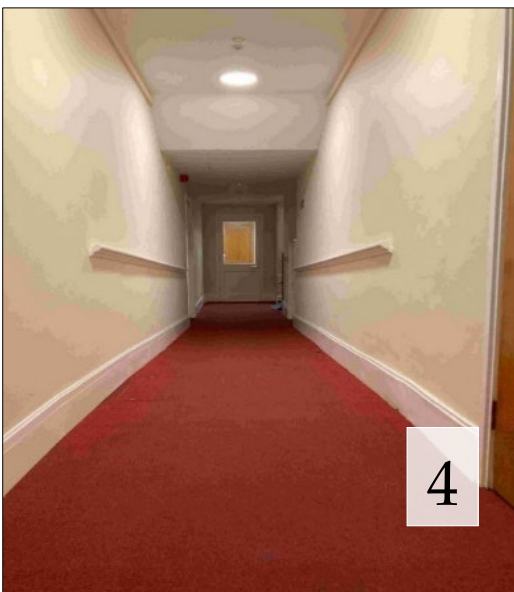


**1.** This passageway is step free and slopes gently downwards from Old Court to the Kitchen Yard. Handrails line the pathway on the approach to the entry arch. The entry arch has a width of 110cm.

**2.** Approached from the direction of Old Court, the accessible access door is the 2<sup>nd</sup> door on the left, around midway along the passageway. This is a push pad entry door, which opens inwards to a width of 100cm. The push pad is on the wall to the right of the door, at a height of 100cm. There is a small lip at the threshold. The push pad on exiting from this door is on the wall to the right of the door, at a height of 100cm.



**3.** Directly ahead, a 2<sup>nd</sup> push pad entry door leads to an interior corridor. The push pad entry button for this door is on the wall to the right, at a height of approximately 100cm. This door opens inwards to a width of 95cm. There is a small lip at the threshold.



**4.** Beyond this door, the corridor has an initial flat section, before sloping downwards. The gradient of this slope is gentle, and there are handrails on either side. The width of the corridor is approximately 150cm.

The slope flattens towards the end of the corridor.





**5.** To the right at the end of corridor, a platform lift gives access to a raised landing, which in turn gives access to the main passenger lift and an accessible toilet. The call button for the platform is on the wall to the right of the lift entrance. The call button is 103cm from the floor. The opening to the platform lift is 90cm wide. There is a short ramp at the lip of the platform, which is somewhat steep and may prove difficult for some users.

The lift control buttons are on the left. **The up/down control buttons must be held down to operate the lift.** There is a separate exit to the platform lift, meaning wheelchair or mobility aid users will not have to reverse on exit. The exit door will open automatically when the platform arrives at the upper level. The lift has an activation and arrival alarm notification. The platform lift does not require staff assistance to operate. A pull chord emergency alarm can be used to call for assistance.



**6.** The exit from the platform lift opens directly facing the entrance to the passenger lift to the 1<sup>st</sup> Floor.

The lift controls are on the left, at a height of approximately 100cm from the floor. The lift doors open to a width of 80cm, and the inner dimensions of the lift are approximately 125cm by 125cm. There is no separate exit from the lift on the 1st floor, meaning wheelchair users will need to reverse when either entering or exiting the lift. Please note that when lift doors open at the ground floor, a separate set of doors at the rear of the lift will open simultaneously. These rear doors lead to a staff only area of the Catering department – please note this lift is also used as a goods lift by the Catering Department.

**7.** The passenger lift emerges to a rear service corridor within the Catering department. To the left, up a gentle incline, the corridor leads to the Fellows' servery, and to the entrance to the Harrison Room beyond. The accessible route to Old SCR is through the [Harrison Room](#). The corridor approaching the Harrison Room is approximately 170cm wide. Double entry doors open to a width of approximately 120cm. The doors open outwards and are moderately heavy. The D-type door handle for each door is approximately 100cm from the floor. A second set of doors on Old Court side of the Harrison room lead to the 1<sup>st</sup> floor corridor. The entrance door to the Old SCR is directly ahead.

The Catering corridor is generally busy, and staff will be on hand to offer assistance and directions.



### Front entrance (non-accessible)

Stepped access to the Old SCR from Old Court is via the large wooden door located immediately to the left of the Bar.



There is a single low step to the area in front of the door. The door has a twist handle (on the left of the door) approximately 120cm from the floor. The door is not automated, is not spring loaded and is very heavy.

There is an immediate step up to the threshold and the small entrance foyer beyond. Directly opposite the entrance, there is a wide staircase leading up the first floor. There are 9 steps (15cm high by 30cm deep) to

the landing. To the right of the landing, the stairs double back 180 degrees, with a further 9 steps to the 1<sup>st</sup> floor corridor. The staircase is wide and has a railing on the right-hand side.

To the right at the top of the stairs, a short corridor leads to door to the Old SCR. The corridor is approximately 170cm wide. Double entry doors open to a width of approximately 120cm. The doors open outwards and are moderately heavy. The D-type door handle for each door is approximately 100cm from the floor.

### Accessible toilets

The nearest accessible toilets are located on the ground floor, immediately to the left when exiting the [passenger lift](#). The toilet is equipped with grab rails, lateral transfer space and an emergency alarm.

Standard female toilets are located just outside the entrance to the [Harrison Room](#) (near the top of the stairs). Standard male toilets are located off the stairway landing.

### Hearing and visual impairments

The Old SCR is not equipped with a hearing loop. There is no visual evacuation alarm system in the Old SCR.



## Walters Room



The Walters room is on the ground floor immediately on the left of the entrance to C-Staircase.

### Accessible entrance

A single width door opens inward to a width of approximately 80cm. The door is light and has push-down handle. A side panel to the door can be opened to create a larger opening. The flooring is wooden and level throughout. The tables are at a height of 73cm from the floor, with recesses suitable for wheelchair users. Furniture is not fixed, and there is generally adequate manoeuvring space between the furniture.

### Accessible toilets

There are no toilet facilities at the Walters Room.



The nearest [accessible toilets](#) are located at by the accessible entrance to the Dining Hall/Harrison Room/Old SCR.

Standard toilets are available at the same location.

### Hearing and visual impairments

Walters Room is not equipped with a hearing loop. There is no visual evacuation alarm system in the Walters.

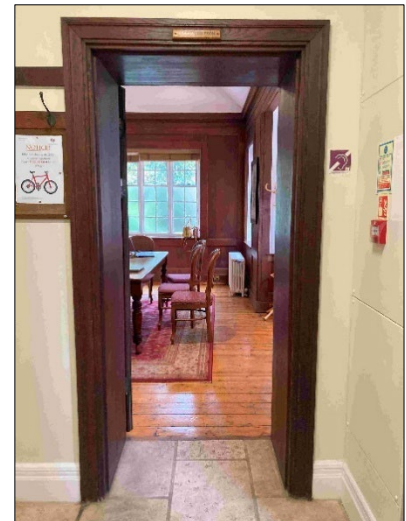
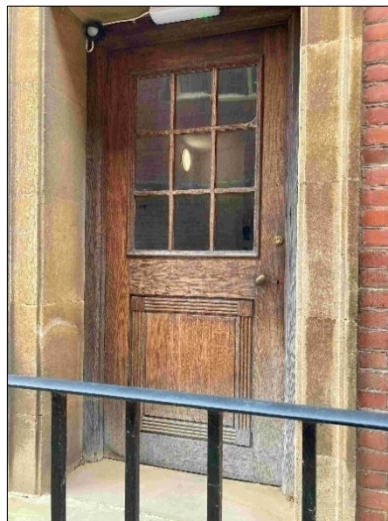
## Arthur Lyttelton Room



The Arthur Lyttelton room is on the ground floor immediately to the right of the entrance to G-Staircase.

## Entrance

The entrance to G-Staircase is via a short ramp (width 120cm, with handrail) A single width door opens inward to a width of approximately 85cm. The door is light and has a twist handle (right). This is not an automated door.



Just beyond the outer entrance door, the entrance door to the Arthur Lyttelton room is to the right. This door opens inwards to a width of 75cm. This is not a powered door. The room accommodates approximately 10 people around a central wooden table. The table is at height of 75cm, and is suitable for wheelchair users. The flooring is wooden and level throughout. The table sits on a rug, which has a lip of not more than 1cm in height.

## Accessible toilets

There are no toilet facilities at the Arthur Lyttelton Room.

The nearest [accessible toilets](#) are located at by the accessible entrance to the Dining Hall/Harrison Room/Old SCR.

Standard toilets are available at the same location.

## Hearing and visual impairments

The Arthur Lyttelton Room is not equipped with a hearing loop. There is no visual evacuation alarm system in the Arthur Lyttelton Room.



## Kathleen Lyttelton Room (not accessible)



The Kathleen Lyttelton room is located on the 1<sup>st</sup> floor of the Porters Lodge tower. **This is not an accessible room.**

## Entrance



The entry door to the staircase is located just to the right of the [front entrance to the Porters' Lodge](#). The door is one step up from ground level. The door opens to a narrow stone staircase, which curves up and to the right. At the 1<sup>st</sup> floor landing, a single width door opens inward to a width of approximately 75cm. The door is light and has a twist handle. This is not an automated door.

## Accessible toilets

There are non-accessible toilet facilities at the Kathleen Lyttelton Room.

The nearest [accessible toilets](#) are located at by the accessible entrance to the Dining Hall/Harrison Room/Old SCR. Standard toilets are available at the same location.

## Hearing and visual impairments

Kathleen Lyttelton Room is not equipped with a hearing loop. There is no visual evacuation alarm system in the Kathleen Lyttelton Room.





## Chadwick Room

The Chadwick Room is a large meeting and events room, with moveable furniture that can be configured into several layouts. The tables are suitable for wheelchair users. The room is carpeted and level throughout, with ample manoeuvring space.

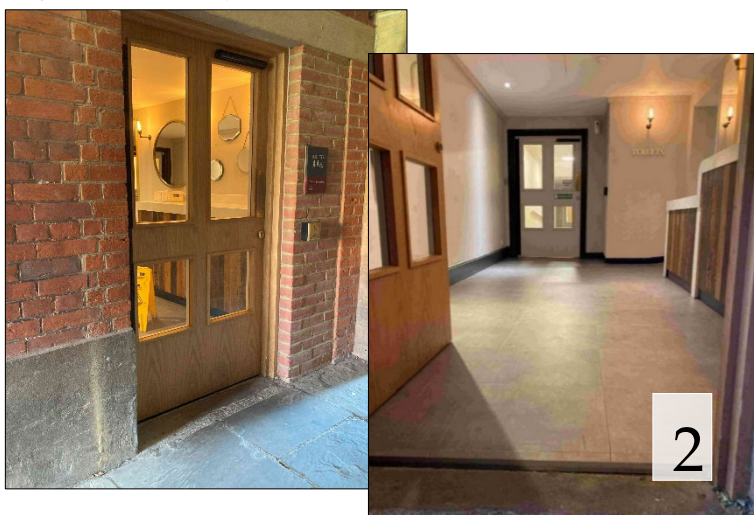
## Accessible entrance

The accessible entrance to the Chadwick Room is via the covered pathway that leads from Old Court to the Kitchen Yard. The entrance to the covered pathway is shown below:



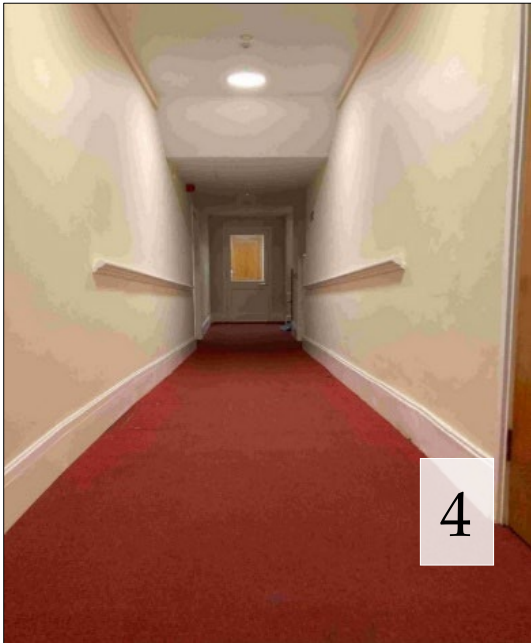
1. This passageway is step free and slopes gently downwards from Old Court to the Kitchen Yard. Handrails line the pathway on the approach to the entry arch. The entry arch has a width of 110cm.

2. Approached from the direction of Old Court, the accessible access door is the 2nd door on the left, around midway along the passageway. This is a push pad entry door, which opens inwards to a width of 100cm. The push pad is on the wall to the right of the door, at a height of 100cm. There is a small lip at the threshold. The push pad on exiting from this door is on the wall to the right of the door, at a height of 100cm.





**3.** Directly ahead, a 2<sup>nd</sup> push pad entry door leads to an interior corridor. The push pad entry button for this door is on the wall to the right, at a height of approximately 100cm. This door opens inwards to a width of 95cm. There is a small lip at the threshold.



**4.** Beyond this door, the corridor has an initial flat section, before sloping downwards. The gradient of this slope is gentle, and there are handrails on either side. The width of the corridor is approximately 150cm.



**5.** At the end of the corridor, there is a door leading to a small vestibule, where a further door leads to the Chadwick room beyond.

The first of these doors opens to a width of 75cm. This is not an automated door. The door has a push-down handle and is not heavy.

The second door opens to a width of 65cm. The door has a push-down handle and is not heavy.



### Front entrance (non-accessible)

The entrance from Old Court is down a set of three stone steps leading to an exterior landing. To the left, a single width wooden entrance door opens to a width of around 80cm. This is not an automated door. The door is somewhat heavy. The door leads to an interior corridor. The entrance to the Chadwick room is to the right, down a set of three steps. These steps are around 17cm high and 35cm deep. The door to the Chadwick room is at the foot of the steps, on the right. The entrance door opens to a width of 75cm, is spring mounted and is not heavy.



### Accessible toilets

The most convenient [accessible toilets](#) are located at the top of the ramp to the right when exiting the accessible entrance to the Chadwick Room. The toilets are located at the rear of the entrance foyer, to the left when approached from the Chadwick Room. The accessible toilet is equipped with grab rails, lateral transfer space and an emergency alarm.

A second accessible toilet is located on the raised landing by the door to the Chadwick room. This can be accessed using the platform lift or nearby steps.

### Hearing and visual impairments

Chadwick Room is not equipped with a hearing loop. There is no visual evacuation alarm system in the Harrison Room.



## Toilets (accessible & standard)

The accessible toilets for Old Court are accessed via the covered passageway that leads from Old Court to the Kitchen Yard.

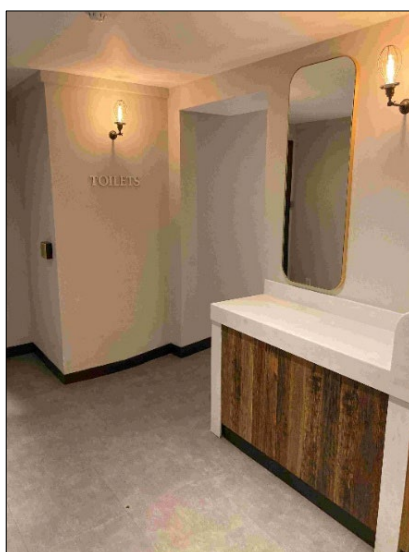
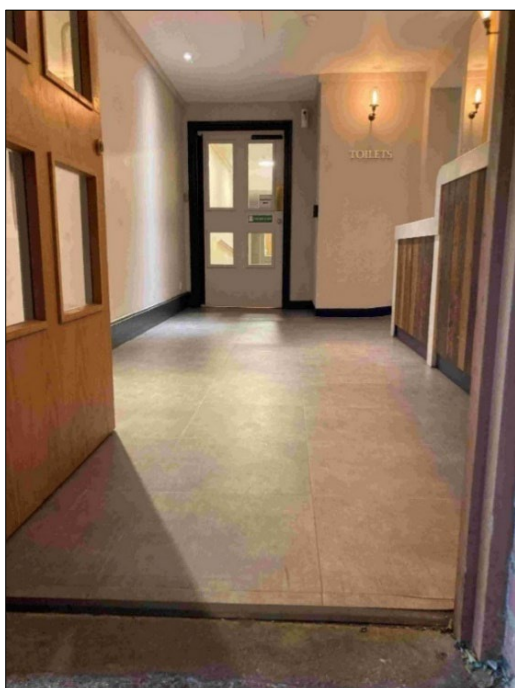


This passageway is step free and slopes gently downwards from Old Court to the Kitchen Yard. Handrails line the pathway on the approach to the entry arch. The entry arch has a width of 110cm. Approached from the Old Court side, the accessible access door is the 2<sup>nd</sup> door on the left, around midway along the passageway.



This is a push pad entry door, which opens inwards to a width of 100cm. The push pad is on the wall to the right of the door, at a height of 100cm. There is a small lip at the threshold. The push pad on exiting this door is on the wall to the right of the door, at a height of 100cm.

The toilets are located at the rear of the entrance foyer on the right. There is a slight incline from the foyer to the toilet corridor. The accessible toilet is to the right and is equipped with grab rails, lateral transfer space and an emergency alarm.



Standard, shared toilets are available at the same location.

## Old Library

The Old Library is located just behind Old Court's C-Staircase, on the Grange Road side of the main site in the area between Old Court and Ann's Court. The Alumni & Development Office occupies the 1<sup>st</sup> floor, and the ground floor houses, the Medical & Veterinary Resources Room, four seminar/teaching rooms and the Rare Books Archive.

Step-free access between Old Court and Old Library is via the [covered passageway in E-Staircase](#), to left immediately beyond the passage, down the ramp. Or via the pathway/footpath in front of College towards the Old Library car park and turning right towards the covered archway.

### Accessible entrance



The entrance to Old Library is located beneath the covered archway.



An automated, single-width door opens inwards to a width of around 90cm. The entry push pad (to the right of the door) is around 90cm from the floor, and the exit push pad (to the left of the door) is around 110cm from the floor. This entrance is unlocked during business hours. There is no intercom, but there is a buzzer/doorbell to the Alumni Office. Outside of working hours, key card access is required, which College members may request. The card reader is located just above the entry push pad, around 105cm from the floor. It is not necessary to activate the key card reader on exiting.





Around 2m beyond the entrance door, the corridor splits: to the left are the meeting/seminar rooms; to the right are the stairs/lift to Alumni & Development Office.

### **Seminar/meeting rooms**



Mostly used for 1:1 or small group teaching, each seminar room is named after a significant donor to the recent restoration of the Old Library. The corridor to the meeting rooms is carpeted and is around 190cm wide, with level, step free access to all rooms. All of the rooms on this floor have single-width doors which open to around 75cm wide. These doors are not automated, but are light and open inwards via push-down handles. Each of these rooms is well lit. Moving along the corridor, the rooms are (in order):

#### **Medical & Veterinary Resources Room**

This room houses the College's virtual anatomy table.

The table is height adjustable, with the controls explained during user inductions. The Medical & Veterinary Resources Room is locked when not in use. Key card access only. The key card reader is to the left of the entrance door, 110cm from the floor.

#### **Abdey Family - Seminar Room 1**

The entry door opens inwards to width of 90cm. There is a pushdown handle, and door is light. This room has two tables/desks with seating for around 8. The desks are around 80cm high and are suitable for wheelchair users. The room is carpeted and well lit, with a full height glass walls to the inner corridor. The room is equipped with a wall-mounted flat screen. The room is not equipped with a hearing loop.

#### **Peter Cartwright - Seminar Room 2**

The entry door opens inward to width of 90cm. There is a pushdown handle, and door is light. This room has two tables/desks with seating for around 8. The desks are around 80cm high and are suitable for wheelchair users. The room is carpeted and well lit, with a full height glass walls to the inner corridor. The room is equipped with a wall-mounted flat screen. The room is not equipped with a hearing loop.

#### **Macpherson - Seminar Room 3**

The entry door opens inward to width of 90cm. There is a pushdown handle, and door is light. This room has two tables/desks with seating for around 8. The desks are around 80cm high and are suitable for wheelchair users. The room is carpeted and well lit, with a full height glass walls to the inner corridor. The room is equipped with a wall-mounted flat screen. The room is not equipped with a hearing loop.

The partition wall between rooms 2 and 3 can be retracted to create a single large space.

#### **Nigel Grimshaw - Seminar Room 4**

The corridor ends at the entrance way to Seminar Room 4, the largest of the seminar rooms.

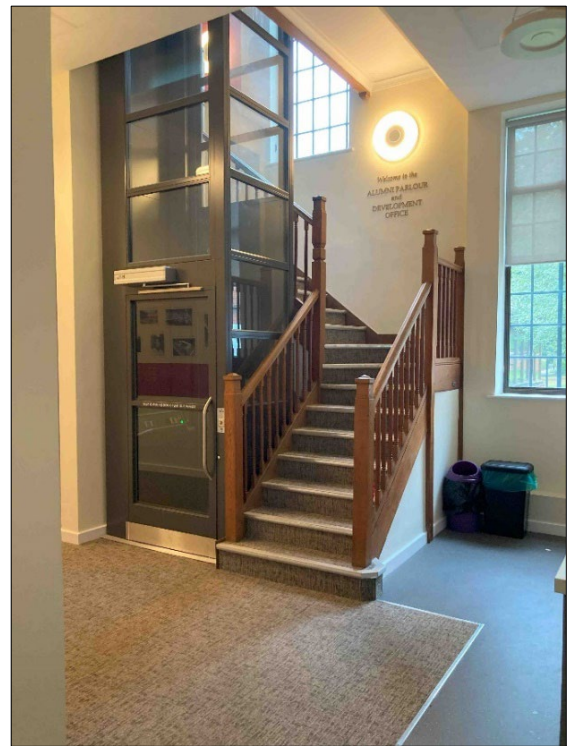
The room has tables/desks with seating for up to 14. The desks are around 80cm high and are suitable for wheelchair users. The room is carpeted, with a full height glass walls to the inner corridor. There are two support pillars towards the centre of the room. The room is equipped with a wall-mounted flat screen. The room is not equipped with a hearing loop. At the rear left corner of the room is a (non-accessible) fire escape leading directly to the car park at the front of the College.



## Alumni & Development Office

To the right on entering, there is set of stairs leading to the Alumni & Development Officer. The first set of steps ascends directly upwards, before turning left 90 degrees for another section of steps, before turning left again for a final straight section. The stairs terminate at a wide landing. The stairs are approximately 90cm wide, 18cm high and 24cm deep. There are handrails throughout.

Immediately to the left of the stairs on the ground floor is a platform lift to the 1<sup>st</sup> floor. There is ample manoeuvring space in front of the lift on both the ground and 1<sup>st</sup> floor. The internal and external lift controls are around 90cm from the floor. The inner dimensions of the lift are around 100cm by 90cm. Separate entrance and exit doors are not provided and so wheelchair users must reverse on entry or exit (there is no mirror to aid with reversing, but the area in front of the lift is clear of obstructions). The lift does not require assistance from staff to operate. There is no audio announcement. The control buttons have braille markings. The exit to the lift on the 1<sup>st</sup> floor is clearly visible from the Alumni & Development Office.



The 1<sup>st</sup> floor landing is carpeted and there is ample manoeuvring space for wheelchair users. The Alumni and Development Office is located directly ahead, facing the lift/top of the stairs. The entrance door to the Alumni & Development Office, as well as the surrounding walls, are fully glazed. There are translucent manifestations on the glass walls and door, but these may be difficult to discern for those with visual impairments.

If you are visiting the Alumni & Development Office and may require assistance, please feel free to contact the Development team directly at:

**Email:** [alumni-office@sel.cam.ac.uk](mailto:alumni-office@sel.cam.ac.uk)

**Website:** <https://www.sel.cam.ac.uk/alumni/contact>

## Archives, Rare Books, and Special Collections

The Archives, Rare Books, and Special Collections area is located to the right of the entrance, to the rear of the ground floor and along a short corridor located to left of lift/stairs to the first floor.

Other than for authorised staff, entry to this area is by appointment only, and Library & Archives staff will be able to provide further advice and assistance on arrival. The area is carpeted, and there is step free access throughout.

**Email:** [archives@sel.cam.ac.uk](mailto:archives@sel.cam.ac.uk)

**Website:** <https://www.sel.cam.ac.uk/about/history-and-archives/selwyn-archives>

## **Accessible toilets**



Accessible toilets are located at the rear of the Old Library, beyond the door to the Rare Books Archive. The accessible toilet is equipped with grab rails, lateral transfer space and emergency alarms.

## **Hearing and visual impairments**

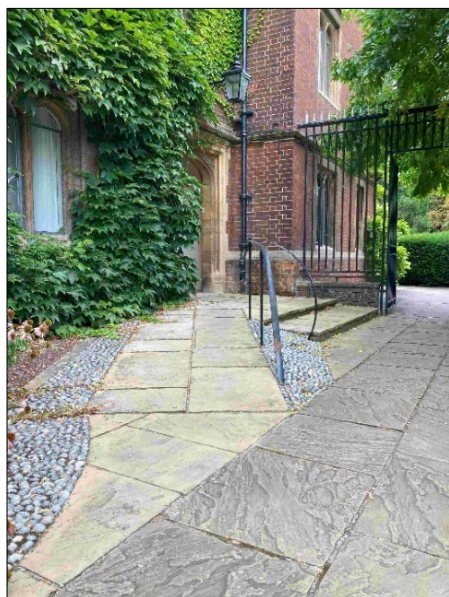
The Seminar Rooms, Development Office and Archives, Rare Books, and Special Collections are not equipped with a hearing loop. There is no visual evacuation alarm system in the Old Library.

## Accommodation (Stairs A-F)

### Accessible accommodation

Accessible accommodation is on the ground floor F Staircase (room 5), at the north-east corner of Old Court.

The entrance to F Staircase is via a short ramp (width 120cm, with handrail). The double entrance doors open outwards to a width of 116cm. This is not an automated door. The door is moderately heavy.



The door opens to an entry foyer. The corridor to room F-05 is to the rear of the entrance foyer. The door to room F-05 opens outwards to a width of 75cm.

### Room F-05

- Step free access
- Key fob access to a widened (75cm) door (this is a powered door)
- Bed height of 55cm
- 73cm desk, with a knee recess of 70cm height, 50cm depth
- Light switches at 75cm and 120cm from floor level
- Electric sockets at 40cm and 100cm from floor level
- Adapted wardrobe
- En suite, accessible bathroom, including:
  - Widened entry door
  - Emergency pull chord alarm
  - Toilet with lateral transfer space, including vertical and horizontal grab rails
  - Wheel-in shower with grab rails and adjustable height shower head
    - A shower seat can be provided on request

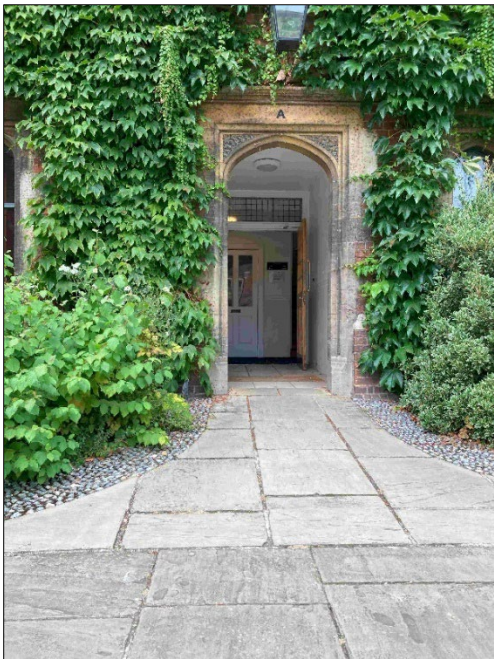
The kitchen ('gyp') is shared with four other rooms. The gyp is located on a side corridor, via two doors opening to a width of 75cm. These are not powered doors.

The gyp has not been adapted for wheelchair use. The counters are at a height of 90cm, and there is no recess beneath the counters. There is a communal (non-accessible) toilet just outside the entrance to the gyp.

Further information on accessible room F-05– including detailed floorplans and measurements – can be found on the [accommodation pages](#) of the College website.



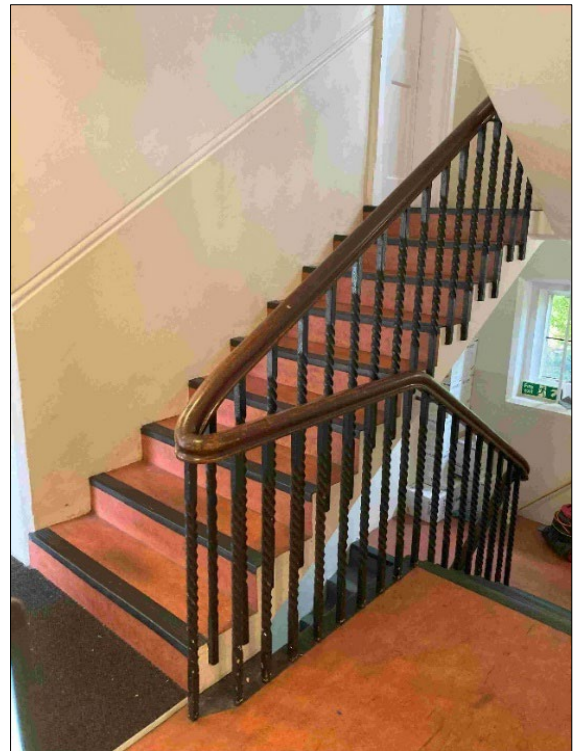
## Standard accommodation



Standard accommodation is found on staircases A-F. There is step-free access to the entrance and ground floors of Staircases A-F, with stair-only to upper floors – there is no lift access to the upper floors in Staircases A-F. The entrance door to each stair is up a short incline to a covered entranceway. The entry doors opens outwards to a width of approximately 80cm.

In most cases, there are approximately 15 steps between floors, with a small landing between floors. Each step is around 17cm in height and 30-45cm in depth.

Old Court has a mix of en suite and shared bathroom accommodation, and each resident has access to a gyp and common living space, usually shared by between four and eight residents. Further information on the standard accommodation in Old Court – including detailed floorplans – can be found on the [College website](#).

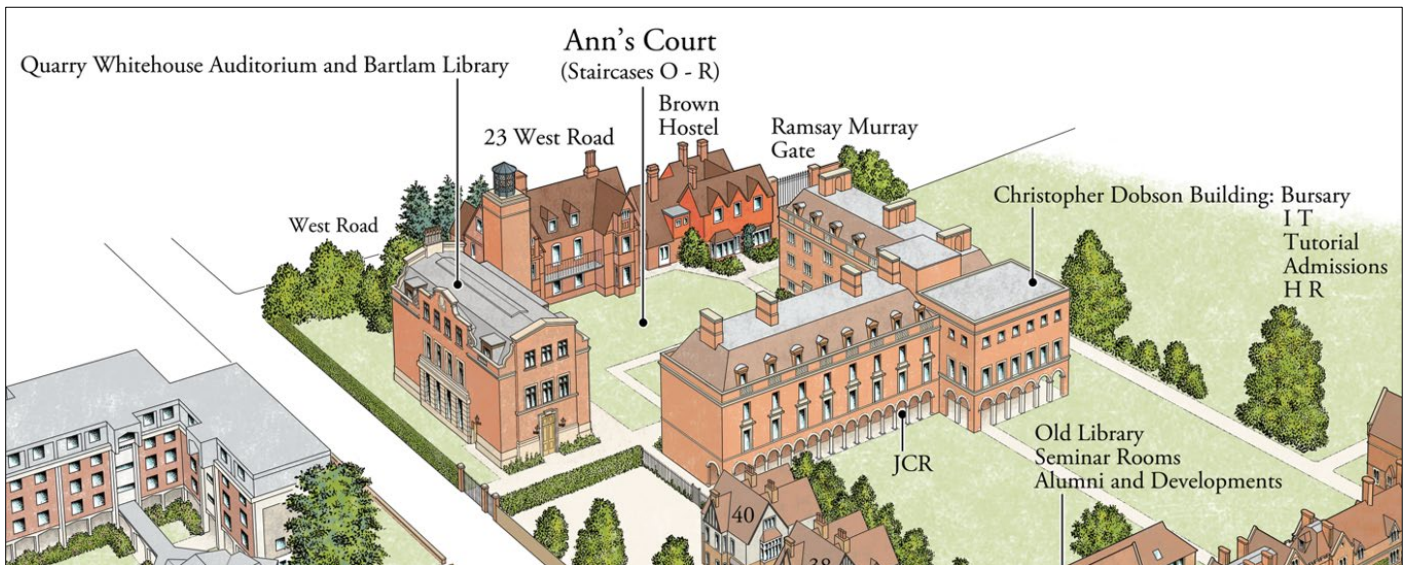


## Laundry

There is a non-accessible laundry off the Kitchen Yard, the left of the exit from the covered passageway.

Accessible laundry facilities are located at the rear of 40 Grange Road, by the south-east corner of [Ann's Court](#) and on [K-Staircase](#), Cripps Court.

# Ann's Court



## Bartlam Library

The Bartlam Library occupies the 1<sup>st</sup> and 2<sup>nd</sup> floor of the Bartlam Library and Quarry Whitehouse Auditorium building, opened in 2021. There is lift access to all floors, and each floor is step free and wheelchair accessible throughout. There are around 100 study spaces/desks, most of which are around 70cm in height and suitable for wheelchair users. The Library is carpeted throughout. The spacious layout gives plenty of manoeuvring space between the shelves and study spaces. Most of the collection is housed on full-height shelves, so volumes on the upper shelves are likely to be out of reach for wheelchair users, in which case the Library team will be happy to provide assistance.

### Entrance

The entrance to the Library is located on the inner side of Ann's Court. The covered entrance is somewhat sheltered from the elements. The door is automated and card access only. The height of the card reader is 100cm and, once activated, the door opens automatically to a width of approximately 100cm. The door is equipped with intercom access to the Porters Lodge.

Upon entering, the left-hand wall of the inner entrance foyer, immediately inside the door, includes a book return box and a self-service borrowing/returns kiosk. The kiosk is touch screen operated, and the screen height is approximately 110cm. This kiosk gives audio feedback when in use, whereas the one on the first floor is silent. The book return slot, located just to the left of the self-issue screen is around 70cm from the floor.







The entrance to the lift is on the right-hand wall. There is around 150cm x 150cm manoeuvring space immediately in front of the lift. The lift doors open to a width of approximately 90cm, and the inner dimensions of the lift are approximately 110cm by 150cm. There is no separate exit to the lift but there is a mirror to aid with reversing on exit. The external and internal lift controls are at a height of around 90cm. The lifts are equipped with an intercom to the Porters' Lodge, where the Porters will be available to respond to emergencies or other issues.

An inner door, directly opposite the main entrance door, leads to the stairs to the 1st and 2nd floor library areas. There are approximately 40 steps between floors (16cm depth by 30-45cm with), with a landing part-way between floors. The stairs are well lit, with handrails (at around 90-100cm height) on both sides of the stairway for most of its length.

The 1st floor landing gives access to an automated door to the 1st floor library space. The Library Office, with reception window, and the Librarian's Office are located on the first floor, along with an accessible computer room and the Ken Wallace Common Room. There is a self-service borrowing/returns kiosk to the right of the entrance. The touch screen to operate this machine is approximately 110cm from the floor. This kiosk operates silently, whereas the one on the ground floor gives audio feedback when in use.

The 1st floor landing also gives access to the Kelvin Chiu Terrace, an outdoor space and seating area overlooking Ann's Court that is open in the spring, summer, and early autumn, when weather and staffing allow. One of the two picnic tables has an extended top for wheelchair accessibility.

The 2nd floor landing gives access to an automated door to the 2nd floor library space. The 2nd floor has a larger number of study spaces than the 1st floor, two meeting/study rooms and a relaxation space with sofas.





## Accessible toilets



There is a single shared accessible toilet on the 1st floor of the library. The outer door to the toilet is located directly ahead as you enter the library space, on the opposite side of the room. This is an automated, push pad entry door. The push pad is to the right of these doors at a height of 90cm. The door opens outwards to a width of 100cm.

Beyond the outer door, the accessible toilet cubicle is located directly ahead. There is a door assist button to the right of the door at 90cm from the floor. The door opens outwards to around 90cm, and the accessible toilet is equipped with grab rails, lateral transfer space and emergency alarms.

Standard toilet facilities are also available at this location.

## Hearing and visual impairments

The Library Office reception area is equipped with a hearing loop, located near the sliding window.

## Opening hours and contact details

### *Library opening hours:*

**During Term:** 07.00 to 02.00

**Vacation:** 07.00 to midnight

### *Contact:*

**Librarian:** Ms Sonya Adams

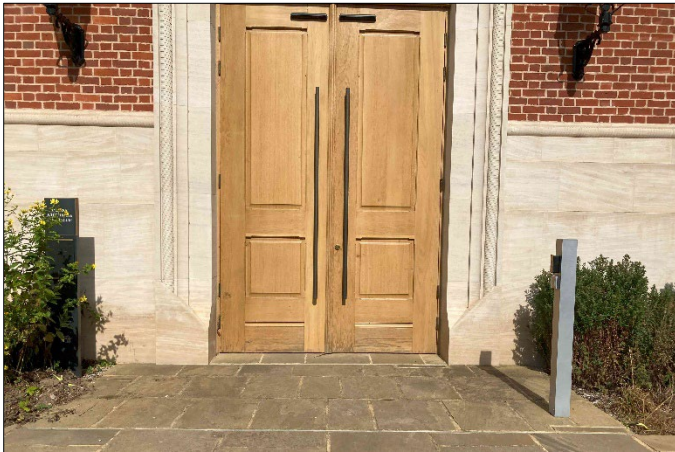
**Email:** [library@sel.cam.ac.uk](mailto:library@sel.cam.ac.uk)

**Phone:** +44 (0)1223 335880

**Website:** <https://www.sel.cam.ac.uk/about/selwyn-library>

## Quarry Whitehouse Auditorium

The Quarry Whitehouse Auditorium (QWA) occupies the ground floor of Quarry Whitehouse Auditorium and Bartlam Library building.



Large, double width entrance doors require card access to open. The card reader is at a height of 90cm from the floor, on a pillar to the right of the entrance doors. Once activated, the card reader releases the door lock, and the doors can then be opened using the push pad button directly above the card reader.

The entrance doors lead to a wide, level foyer. At the rear of the foyer, another set of double width, automated doors leading to the main events space.

When exiting, the button to activate the automated doors is on the wall to the right at a height of 100cm.

### Events space

The large event space has step-free, wooden flooring throughout, and can be divided in two depending on the needs of each event. The space is well-lit and allows for plenty of natural light.

### Auditorium

The rear portion of the space has retractable tiered seating for up to 139 delegates. When set-up for a lecture, the doors to the auditorium open to a width of around 75cm. The stepped isles on either side of the seating include handrails along the outer wall, and there is generous space between the seats. There is no wheelchair access to the tiered seating or dedicated space for wheelchair users. Wheelchair users can instead use the space in front of the tiered seating. The speaker's lectern is around 100cm in height, and is not adjustable.

### Accessible toilets

The shared accessible toilet is located in the entrance foyer (to right on entering the outer doors). The push pad for the automated outer door is approximately at 90cm height, and the door open to around 90cm. There is a door assist button for the cubicle door, to the left of the door, 90cm from the floor. The toilet is equipped with grab rails, lateral transfer space and emergency alarms.

### Hearing and visual impairments

There is a hearing assistance system for the auditorium.

# The Christopher Dobson Building (College Offices)

The Christopher Dobson building is home to the College's administrative offices:

## Ground floor:

- Bursary

## 1<sup>st</sup> floor:

- Tutorial and Admissions offices

## 2<sup>nd</sup> floor:

- Bursar
- Operations Manager
- IT Office
- HR Manager and HR Office
- College Nurse & Welfare Officer

There is stair and lift access to all floors. The Dobson building is locked outside of regular, Monday-Friday working hours.

## Entrance



The entrance door is located beneath the covered passageway on the route [between old court and Ann's court](#), and is on the right-hand side when approaching from OC. This is a large, heavy door. The entranceway is step free, but this door is not automated and opens outwards to a width of 105cm. There is a large, circular doorknob. The weight of the door and design of the doorknob may prove challenging to open for some users.

The entrance door leads to a wide entrance foyer on the ground floor.

The entrance to the Bursary ([email](#)) is on the right, to the rear of the entrance foyer, where the right-hand wall meets the rear wall. There is step free access to the Bursary via a single-width door. This is a manual door which opens inwards. Visitors are asked to knock before entering. The door to the Bursary will be locked out of hours or when the Bursary team are away from their desks. At all other times, the Bursary team will be able to provide assistance with entering and exiting the office.

## Lift and stairs to upper floors

The entrance to the lift is on the left-hand wall. There is ample manoeuvring space immediately in front of the lift. The lift doors open to a width of approximately 75cm, and the inner dimensions of the lift are approximately 110cm by 150cm. There is limited manoeuvring space within the lift, but there is a mirror to aid with reversing. The external and internal lift controls are at a height of around cm. The lift controls are not backlit and do not have braille numbering. The lifts are equipped with an intercom in case of emergency.



The stairs to the first floor are located on the left to the rear of the entrance foyer, to the right of the lift. Between each floor, there are two small landings, where the stairway takes a 90 degree turn to the left.

There are 27 steps from the ground to 1st floor, with landings after 11 and 6 steps. There 23 steps from the 1st floor to the 2nd floor, with landings after 11 and 2 steps.

Each stair is around 18cm in height and 30cm in depth. The stairways are well lit and have natural light from large exterior windows, and there is a wooden handrail on either side of the up/down sections.

On each floor, the lift and stairs open to a large interior foyer. The administrative offices on each floor are located opposite and slightly to the left of the lift doors. There is vinyl flooring on all stairs and landing areas.

The door from the landing leads to a small fire refuge approximately 3 metres long and 1.5 meters wide. At the end of the refuge, a 2nd door gives access to office corridor. The office areas are carpeted throughout. Individual office doors are approximately 75cm wide and open inwards, and they are not especially heavy. The offices on each floor have access to a shared kitchen. These kitchens are not adapted for wheelchair users.

## **Accessible toilet/shower room**

### **1<sup>st</sup> Floor**

There is an accessible toilet, along with three standard toilets, on the first floor. From the landing foyer, a single width outer door leads to corridor. The accessible toilet is located at the end of the corridor. This is not an automated door but is light and opens to a width of 80cm. The accessible toilet is equipped with grab rails, lateral transfer space, lowered sink and fixtures, and an emergency alarm.

The standard toilets (each cubicle has a toilet, sink and hand-towel dispenser) are found along the left-hand side of the corridor when entering from the landing foyer.

### **2nd Floor**

From 2<sup>nd</sup> floor landing foyer, a single width outer door leads to corridor. An accessible shower room is located at the end of the corridor. The door is not automated, but is light and opens inwards to a width of 80cm. There is a wheel in shower with seat, adjustable height showerhead, with grabrails and lowered sink. The shower room has an emergency alarm and a window allowing for natural light and ventilation.

The standard toilets (each cubicle has a toilet, sink and hand-towel dispenser) are found along the left-hand side of the corridor when entering from the landing foyer.

There are no toilet or washing facilities on the ground floor.

## **Hearing and visual impairments**

The Dobson building and its offices are not equipped with a hearing loop or visual alarm system.

## JCR

The JCR is located in the basement space beneath Q and R staircases. The JCR is a fully accessible breakout/social space with pool and table-tennis tables, kitchen/dining area, computer and TV rooms.

### Entrance

There are two entrances to the JCR:

#### South Entrance (accessible)



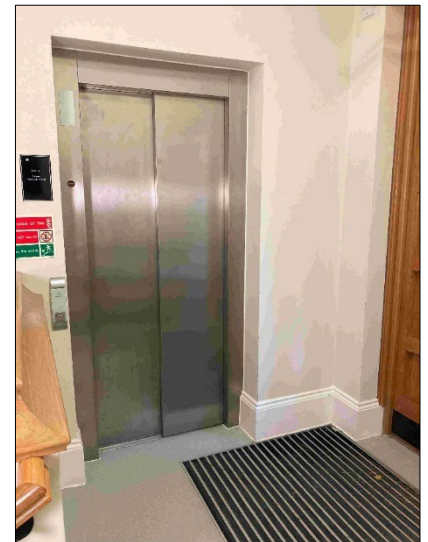
The accessible entrance is off the covered walkway on the south side of Ann's court, facing outwards towards Old Court. This entrance gives stepped and lift access to the JCR.

The entrance door opens outwards to a width of to a width of around 110cm. This door is heavy, and is not automated.

Steps are located immediately beyond the entrance and lead down to the JCR. There are 15 steps, which range in height from 15-18cm from 30cm to 45cm depth, and there are handrails along full length of the staircase.

The lift is to the right. There is ample manoeuvring space immediately in front of the lift. The lift doors open to a width of approximately 80cm, and the inner dimensions of the lift are approximately 120cm by 140cm. There is

limited manoeuvring space within the lift, but there is a mirror to aid with reversing. The external and internal lift controls are at a height of around 90-100cm. The lift controls are backlit and have braille numbering. The lifts are equipped with an intercom to the Porters' Lodge, where the Porters will be available to respond to emergencies or other issues 24hours per day, 365 days per year.



#### North Entrance (not accessible)

The other entrance on the east of the building (facing inwards to Ann's Court) is stepped access only. A somewhat heavy single width door opens outwards to a width of approximately 105cm. This is not an automated door. Steps located immediately beyond the entrance lead down to the JCR. There are 15 steps, which range in height from 15-18cm from 30cm to 45cm depth, and there are handrails along full length of the staircase.

## JCR and communal kitchen



The lifts and stairs open to a wide corridor, with stepped free access to the JCR. There common areas are carpeted and step free throughout. There is plenty of manoeuvring space for wheelchairs – the furniture is not fixed and can be moved if necessary.

The kitchen area is accessed through a single-width fire door, which opens to a width of around 85cm. This is not an automated door. The kitchen countertops are around 90cm high, with no recess beneath. There is limited manoeuvring space in the kitchen. There is a countertop/serving hatch from the kitchen to the breakout area.

## TV room

Located off the main JCR common room, the door to the TV room is around 75cm in width (this is not an automated door) The TV room is carpeted and level throughout. The tables are suitable for wheelchair users.

## Computer room

Located off the main JCR common room, the door to the TV room is around 75cm in width (this is not an automated door). The computer room is carpeted and level throughout, and its tables/desks are suitable for wheelchair users.

## Accessible toilets



The shared accessible toilet is in the corridor by the exit to the stairs lift. This is not an automated door but is light and opens to a width of 80cm. The accessible toilet is equipped with grab rails, lateral transfer space, lowered sink and fixtures, and emergency alarms.

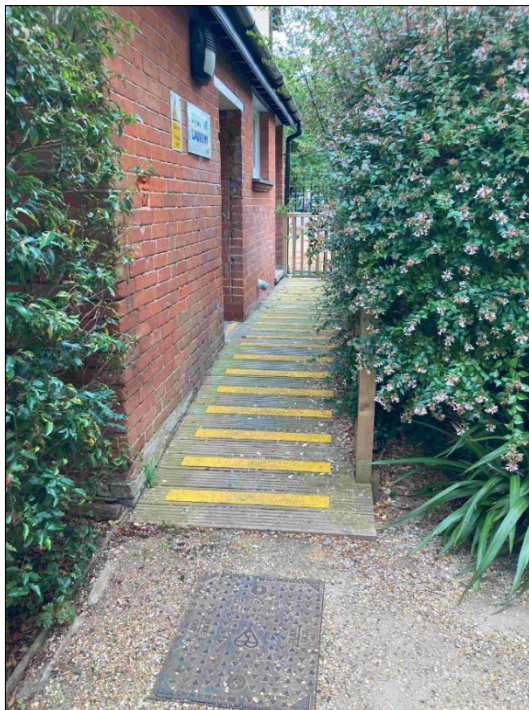
## Hearing and visual impairments

There is a hearing loop in the TV room. There is no hearing loop for the common room and computer room. There is no visual alarm system in the JCR or adjoining rooms.



## Laundry (accessible)

The Laundry is located to the rear of the hostel at 40 Grange Road, at the south-east corner of Ann's court. From the covered walkway on the south side of Ann's court, a gravel path leads to an entry ramp to the laundry. The wooden entry ramp is approximately 100cm wide, with a handrail to the right. The ramp is up a gentle incline, and there is a small lip at the foot of the ramp. The ramp levels out to a small landing, and the covered entranceway to the laundry is on the left. Manoeuvring space at the top of the ramp is somewhat limited. The signpost for the laundry is to the left of the entranceway.



The door to the laundry is on the right, just inside the covered entry way. The door opens outwards to a width of approximately 70cm. The door has a self-closing mechanism and somewhat heavy.



The machines are located along the righthand wall. A row of three washing machines is at ground level, with a row of three tumble driers above these. A fourth tumble drier is located at ground level, to the right of the washing machines.

The laundry facilities are cashless and are operated by an external provider, Circuit Laundry. Payment is via a top-up system through a downloadable app. The payment terminal is located on the wall the rear right of the laundry (opposite the door). The terminal is approximately 110cm from the floor. There is no emergency assistance alarm.

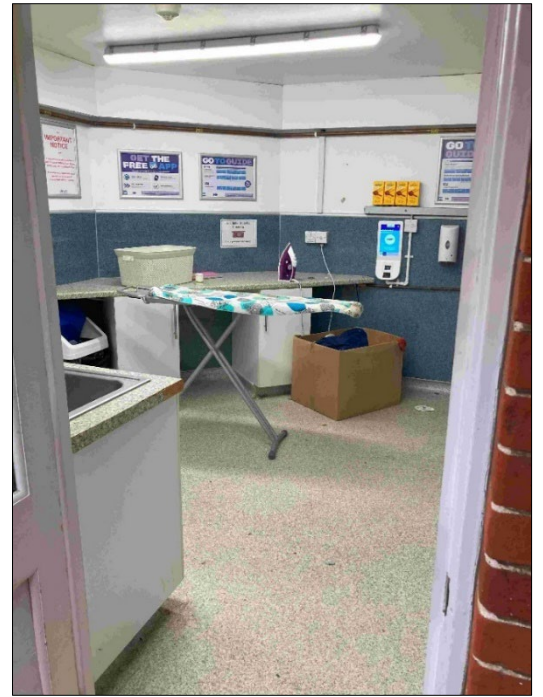
More information on College laundries is available in the [Student Accommodation Handbook](#).

The College can offer assistance with laundry for students with mobility or other challenges. Please contact the [Operations Manager](#) if you require assistance.

The interior of the laundry is level throughout. The machines do not create an obstacle, but the space is relatively small and other users' laundry bags etc. could create an obstruction. The laundry is also equipped with a sink and counter space, and an ironing board.

### **Hearing and visual impairments**

The Laundry is not equipped with a hearing loop. There are no audio announcements from the machines or payment terminal. There is no visual evacuation alarm system.



## **Accommodation (Stairs O-R)**

### **Accessible accommodation**

Accessible accommodation in Ann's court is available in the following rooms:

- O-01 (ground floor)
- O-12 (1<sup>st</sup> floor)
- Q-01 (ground floor)
- Q-02 (ground floor)
- R-01 (ground floor)
- R-02 (ground floor)

All rooms have step free access. Accessible rooms in Ann's Court, typically include the following features:

- Step free access
- Manual door with key lock (keyhole at 95cm)
- Unobstructed turning space
- Bed height of 48cm
- Desk, with a knee recess
- Light switches at 75cm and 120cm from floor level
- Raised electric sockets at 40cm and 100cm from floor level
- En suite, accessible bathroom, including:
  - Outward opening door, to a width of approximately 87cm
  - Emergency alarm
  - Toilet with lateral transfer space, including vertical and horizontal grab rails
  - Wheel-in shower with, adjustable height shower flip-down shower set, grab rails and adjustable height shower head

Please note that features and specifications may vary slightly between accessible rooms.

Each accessible room has access to an adapted shared kitchen ('gyp'). Doors typically open to a width of 75cm, and each gyp has lowered or adjustable height counter spaces, low cupboards and unobstructed turning space (specifications may vary between gyms).

Further information on accessible rooms O-01, O-12, Q-01, Q-02, R-01 and R-02 – including detailed floorplans and measurements – can be found on the [accommodation pages](#) of the College website.

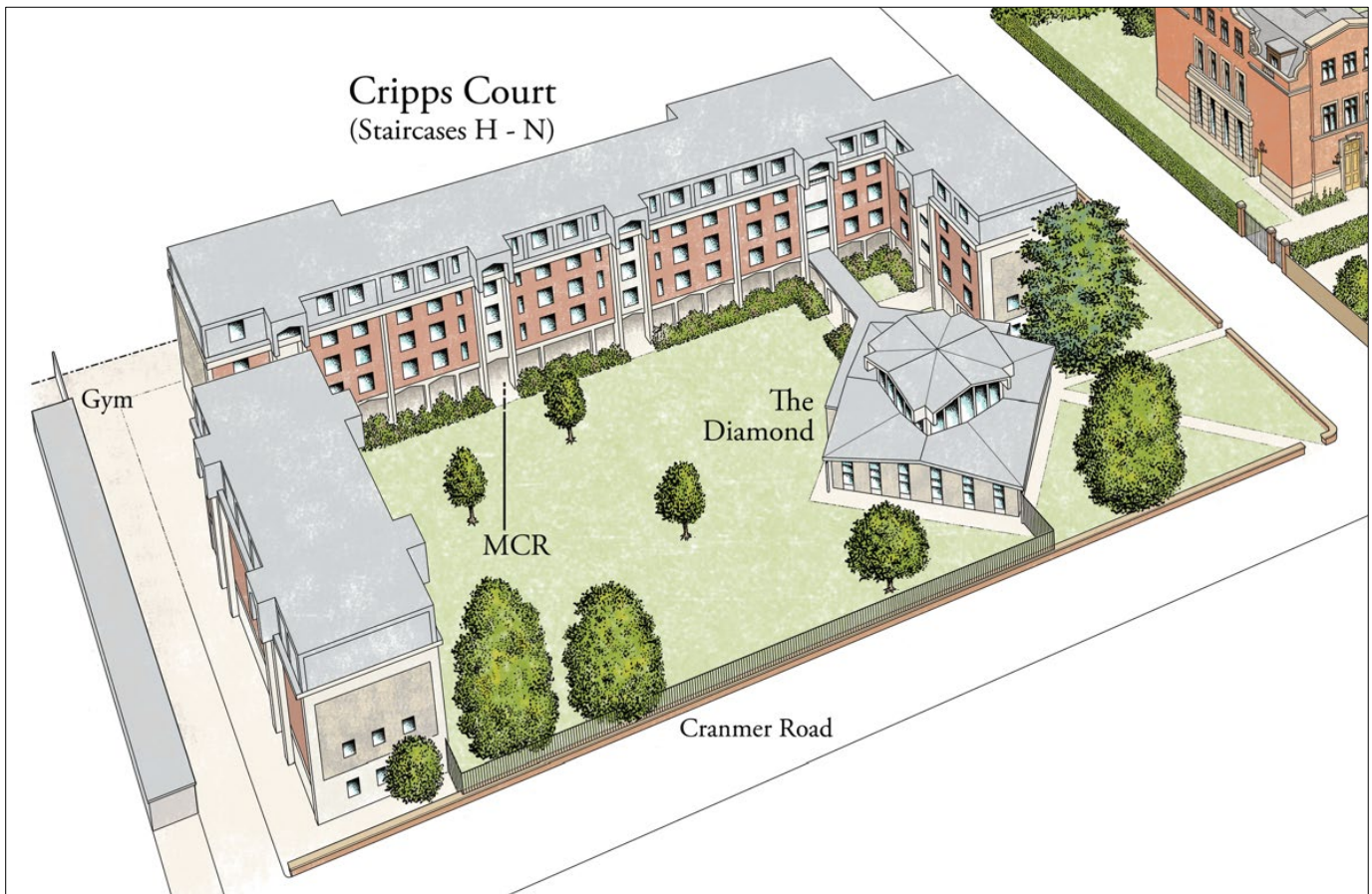
### **Standard accommodation**

Standard accommodation is found on staircases O, P, Q and R, with lift and stair access to the upper floors. In most cases, there are approximately 15 steps between floors, with each step around 17cm in height and 30-45cm in depth. The steps are clearly marked, staircases are well-lit, and handrails are present on each side of for most of the length of the stairs.

All rooms in Ann's Court are en suite and have access to a gyp and common living space, usually shared by between four and eight residents. Further information on the standard accommodation in Ann's Court – including detailed floorplans and measurements – can be found on the [accommodation pages](#) of the College website.

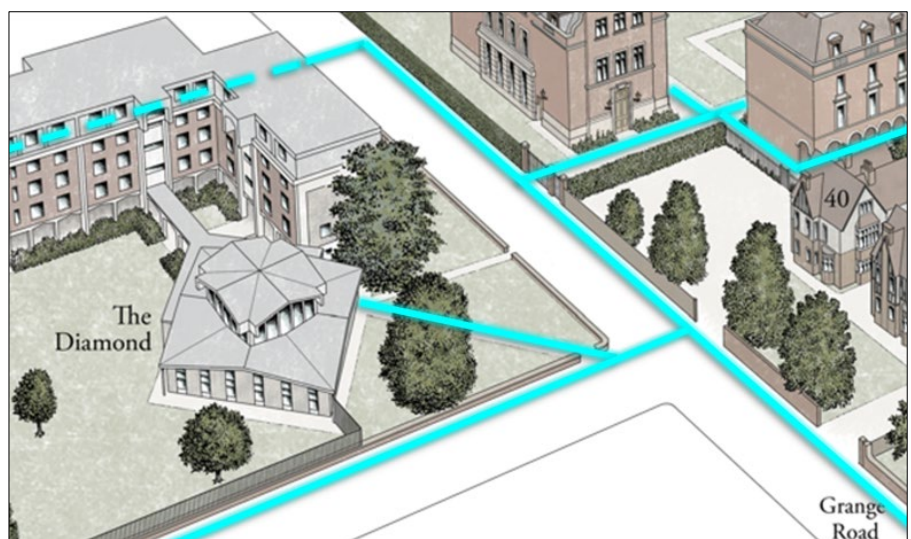


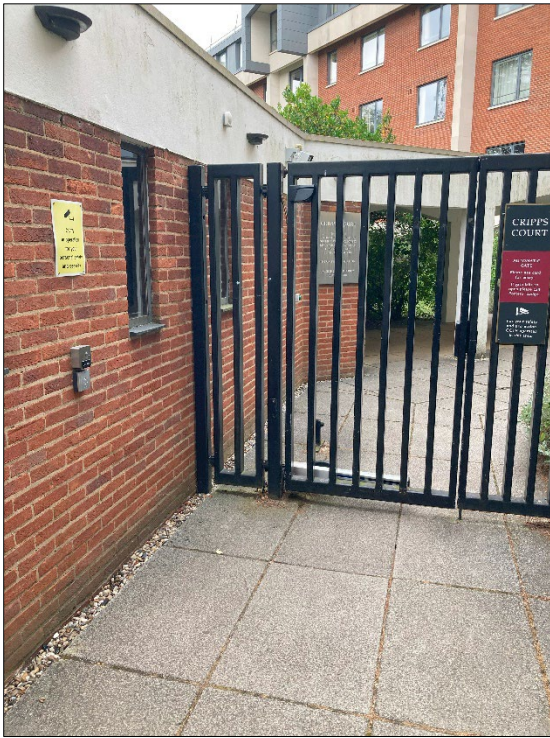
# Cripps Court



## Front entrance

When crossing from Grange road, a dropped kerb at the corner of Grange Road and Cranmer Road gives access to the entrance pathway to Cripps Court. There is a dip in at the lip of the dropped kerb, where the kerbstone is edged by a row of cobble stones, and the road surface immediately in front of the kerb is in somewhat poor condition. The footpath slopes upwards from the kerb, and the sloped area includes tactile paving. Some of the tactile paving stones are cracked.





Cripps Court is accessed via a step-free/level access, single-width entrance gate, which opens to a width of approximately 90cm. The gate is key card access only. The height of the card reader is approximately 100cm, and once activated the gate opens automatically.

The entrance is signposted and the immediate approach to the main gate is up a gentle incline. The gate is open to the elements and is well lit at night.

A wide, covered walkway gives step-free access the entrance to each of the Cripps' seven staircases, the Diamond and the MCR. The walkway is level and smoothly paved throughout.



# The Diamond

## Entrance



The Diamond is accessed via a single-width (approximately 100cm) entrance door, which can be opened via a push pad entry button located to the left at the foot of the approach ramp. The height of entry/exits pads is approximately 100cm. There is a small lip to at the entrance threshold.

## Events space

From the wide entrance foyer, there is an inner door (approximately 75cm) to the meeting and events space. The space is wheelchair accessible and level throughout.

## Accessible toilets

Male and female accessible toilets are located at the rear of the entrance foyer.

The female accessible toilet is right hand transfer. The male accessible toilet is left hand transfer. Both are equipped with a grab-rails, horizontal transfer space and emergency alarms.

## Hearing and visual impairments

The Diamond is not equipped with a hearing loop or visual fire alarm system.



## MCR

### Entrance

The MCR common room is located on the ground floor of J-Staircase. The entrance is step-free, and the door opens to a width of approximately 90cm. This is not an automated door. The door opens outwards and is moderately heavy. There is a small lip at the threshold.

The common spaces are wheelchair accessible and level throughout. The access width to the shared kitchen is approximately 70cm, and the countertops are at a height of around 90cm.



### Accessible toilets

A shared accessible toilet is located on the ground of floor of J-Staircase, just outside the entrance to the MCR. This toilet is equipped with grab rails, horizontal transfer space and emergency alarms.

### Hearing and visual impairments

The MCR is not equipped with a hearing loop or visual fire alarm system.

## College Gym



The gym is open to all College members (6.00am to 12.00midnight, key access), subject to an induction process. There is level, step free access to all equipment. However, the space is relatively small and floor-standing equipment leaves limited room for manoeuvring. The College gym is not staffed, and there is no emergency alarm system.

### Entrance

There is step-free access to double entrance doors, which open inwards to a width of approximately 160cm. The doors are not automated, and are moderately heavy.

### Accessible toilets & shower

A shared accessible toilet is located immediately to the left of the entrance. The toilet has unobstructed turning space and is equipped with grab rails, horizontal transfer space and emergency alarms. There are no other standard toilet facilities in the gym, so the accessible toilet is shared among all users.

An accessible, wheel-in shower is also available, equipped with shower seat, horizontal and vertical grab rails, and adjustable height shower head.

### Hearing and visual impairments

The Gym is not equipped with a hearing loop or visual fire alarm system.

# Accommodation

## Accessible accommodation

Two adjacent accessible rooms are located on the ground-floor of I-Staircase, just inside the main entrance to Cripps Court. Accessed via a step free entrance foyer, each room comes equipped with the following accessibility features:

### Room I-02

- Step free access
- Key fob access to a widened (86cm) door (this door is not powered)
- Bed height of 48cm
- 73cm desk, with a knee recess of 70cm height, 50cm depth
- Light switches at 75cm and 120cm from floor level
- Electric sockets at 40cm and 100cm from floor level
- Adapted wardrobe
- En suite, accessible bathroom, including:
  - Widened doors
  - Emergency alarm
  - Toilet with lateral transfer space, including vertical and horizontal grab rails
  - Wheel-in shower with grab rails and adjustable height shower head
    - A shower seat can be provided on request

### Room I-03

- Step free access
- Key fob access to a widened (86cm) door (this is a powered door)
- Bed height of 48cm
- 73cm desk, with a knee recess of 70cm height, 50cm depth
- Light switches at 75cm and 120cm from floor level
- Electric sockets at 40cm and 100cm from floor level
- Adapted wardrobe
- En suite, accessible bathroom, including:
  - Widened doors
  - Emergency alarm
  - Toilet with lateral transfer space, including vertical and horizontal grab rails
  - Wheel-in shower with grab rails and adjustable height shower head
    - A shower seat can be provided on request

The shared kitchen ('gyp') for these rooms has a powered door entrance and good wheelchair access, including lowered surfaces and fixtures.

For residents or visitors not occupying an accessible room, the nearest accessible toilets are located in the [Diamond](#) or on the ground floor of J-Staircase by the entrance to the [MCR](#).

Further information on accessible rooms I-02 and I-03 – including detailed floorplans and measurements – can be found on the accommodation pages of the [College website](#).

## Standard Accommodation

Standard accommodation is found on staircases I-N, with stair access to upper floors – there is no lift access to the upper floors in Cripps Court). In all cases, there are approximately 15 steps between floors, with each step around 17cm in height and 30-45cm in depth. The staircases are well-lit, and handrails are available throughout.



All rooms in Cripps Court are en suite and have access to a gyp and communal living space, usually shared between four and eight residents, depending on the layout of individual floors/staircases. Further information on the standard accommodation in Cripps Court – including detailed floorplans and measurements – can be found on the [College website](#).

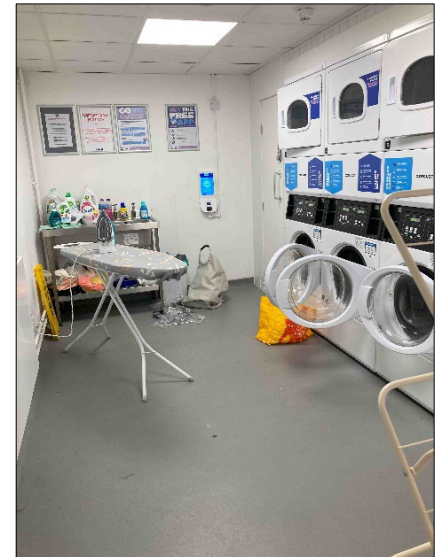
## Laundry (accessible)

The student laundry for Cripps Court is located on the ground floor of K-Staircase. The entrance to K-Staircase is step-free, and the door opens outwards to a width of approximately 90cm. This is not an automated door. The door is moderately heavy.

The laundry is on the left-hand wall, near the base of the stairs. The door is key access only. The lock is at 75cm and the door opens inwards to a width of 74cm. There is a 1cm lip at the threshold when entering the laundry. There is a larger 2cm lip at the threshold when exiting.

There is a row of three washing machines at ground level along the righthand wall, with a row of three tumble dryers above. Two additional tumble dryers are available at ground level to the right of the washing machines.

The laundry facilities are cashless and are operated by an external provider. Payment is via a top-up system through a downloadable app. The payment terminal is located on the wall the rear right of the laundry (opposite the door). The terminal is approximately 110cm from the floor. There is no emergency assistance alarm.



More information on College laundries is available in the [Student Accommodation Handbook](#).

The College can offer assistance with laundry for students with mobility challenges. Please contact the [Operations Manager](#) to discuss.

# Hostel Accommodation (accessible)

## 1 Selwyn Gardens



No. 1 Selwyn Gardens is located approximately 200m from the Porters Lodge entrance, at the first right turn off Grange Road. There is not a dedicated crossing from the Selwyn College side of Grange Road.

### Entrance

There is ramp access to the front entrance door. The ramp is located through an entrance gate from the pavement. The gate opens inward to a width of around 100cm. The gate handle is to the left, around 70cm from the ground.

The ramp is approximately 130cm wide, with a handrail along its length.

The door is automated when activated with a key card. The key card reader is to the right of the door at a height of 90cm. There is also a door buzzer. The door opens inwards to a width of 95cm.

### Accommodation

The accessible bedroom (room 02) on the ground floor includes the following features:

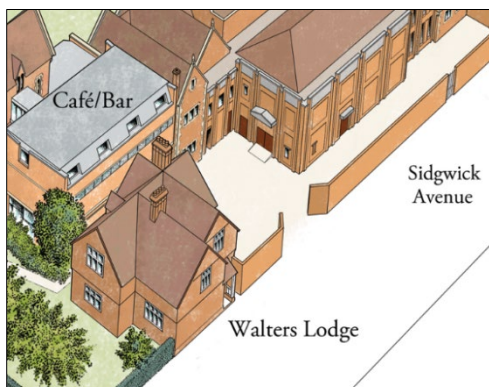
- Step free access
- Manual door with key lock (keyhole at 95cm)
- Unobstructed turning space
- Bed height of 48cm
- 70cm desk, with a knee recess
- Light switches at 75cm and 120cm from floor level
- Raised electric sockets at 40cm and 100cm from floor level
- En suite, accessible bathroom, including:
  - Outward opening door, to a width of approximately 75cm
  - Emergency alarm
  - Toilet with lateral transfer space, including vertical and horizontal grab rails
  - Wheel-in shower with adjustable height shower, flip-down shower set, grab rail and adjustable height shower head

Residents have access to a shared kitchen. The door to the kitchen opens to a width of 75cm (this is not an automated door). The surfaces are at height of 92cm and there is not a knee recess under the surfaces. There are low level cupboards.



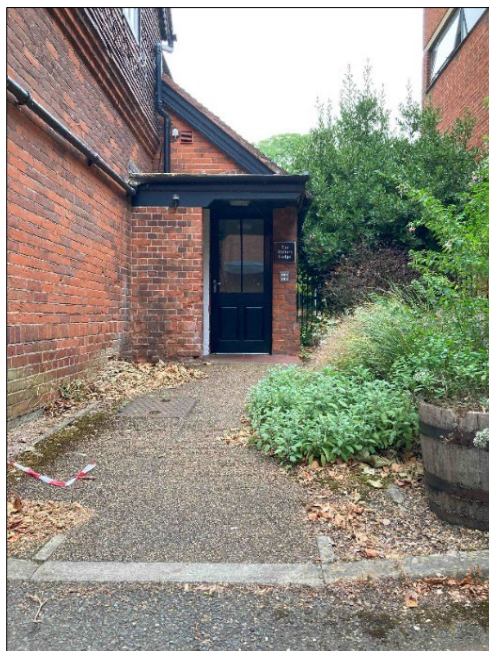


## Walters Lodge



Walters Lodge is located at the south-west corner of the main site, off Sidgwick Avenue. Walters Lodge can also be accessed from the covered passageway from Old Court to the Kitchen Yard. There is a small car park immediately outside the (permit holders only). The gates to the car park/Kitchen Yard close around 3pm daily, but times may vary

### Entrance



The rear (accessible) entrance is located off the Kitchen Yard. The approach is up a gentle incline to a covered entryway. A single width door opens inwards to a width of 85cm. This is not a powered door. There is a small lip at the threshold. Lip on door and on doormat inside door. To the right of the door at a height of 110cm there is panel with buzzers for each of the 6 rooms in Walters Lodge. The door opens to a width of 80cm.



The front (non-accessible) entrance to Walters Lodge is directly off the pavement on Sidgwick Avenue. A step leads to a small covered landing immediately in front of the door. The door is key access only and is not automated. There is a push down handle at a height of 100cm from the ground. The lock is located just below the handle, at a height of 95cm. A panel with buzzers for each room of the rooms in Walters Lodge is located on the wall to right of the door, at height of 120cm.



## **Accommodation**

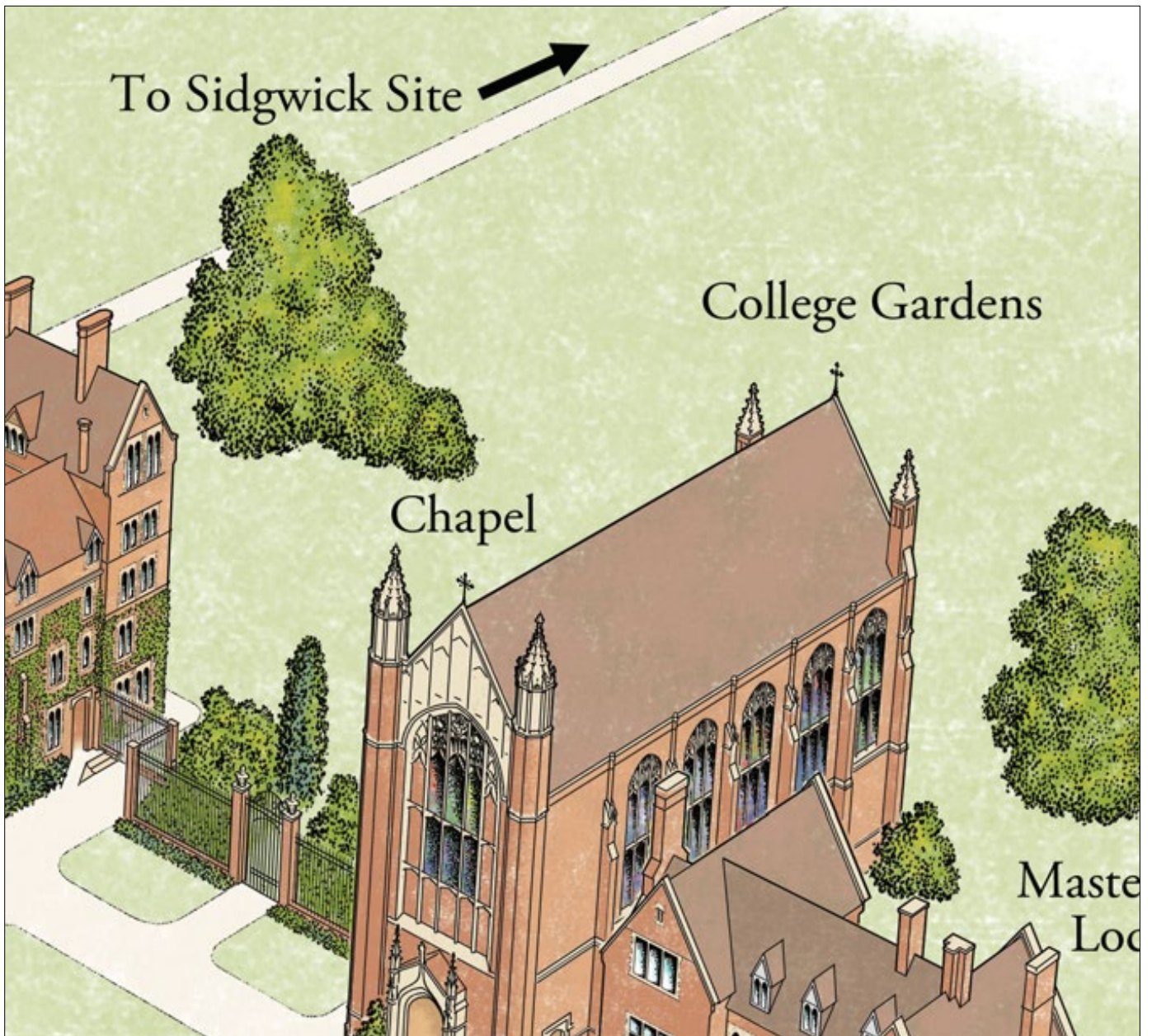
Step-free, accessible accommodation is available in room WL03. This room includes the following features:

- Step free access
- Manual door with key lock (keyhole at 95cm)
- Unobstructed turning space
- Bed height of 48cm
- 70cm desk, with a knee recess
- Light switches at 75cm and 120cm from floor level
- Raised electric sockets at 40cm and 100cm from floor level
- En suite, accessible bathroom, including:
  - Outward opening door, to a width of approximately 75cm
  - Emergency alarm
  - Toilet with lateral transfer space, including vertical and horizontal grab rails
  - Wheel-in shower with, adjustable height shower, flip-down shower set, grab rail and adjustable height shower head

Residents have access to a shared kitchen. The door to the kitchen opens to a width of 75cm (this is not an automated door). The surfaces are at height of 92cm and there is not a knee recess under the surfaces. There are low level cupboards.

There is no lift access to rooms on 1<sup>st</sup> floor.

## Gardens



The lower gardens, to the rear of the chapel, are open to all college members and visitors throughout the year. During the summer, the lower gardens host parties and events and are popular with college members looking for a quiet place to enjoy the sunny weather. The Maintenance department and Gardens department can be accessed through the lower gardens. The [Sidgwick Gate](#) to the University's Sidgwick Site is at the rear of the gardens, on the far west side of the College site.





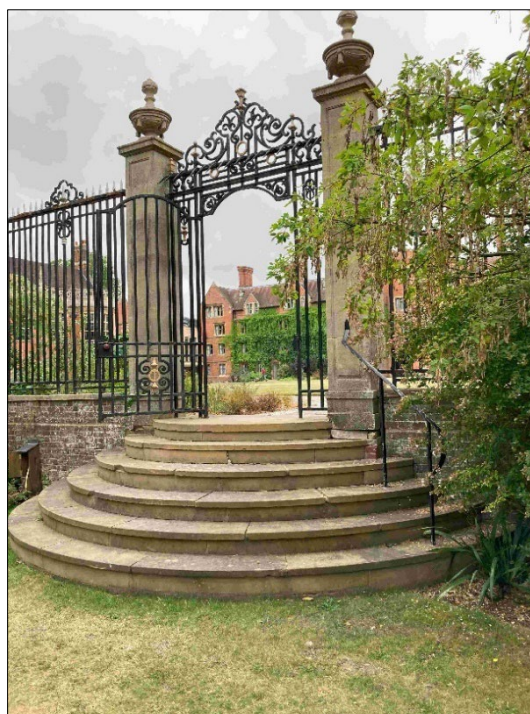
From Old Court, there is step free access to the lower gardens via the [covered passageway/ramp at E staircase](#), which gives access to the tarmac pathway that runs through the gardens. There is a slight lip where the tarmac meets the edge of the grass (shown below).



Further along the tarmac path, a gravel path leads deeper into the gardens and to the Maintenance & Gardens yard beyond. This is loose gravel, and may not be suitable for some wheelchair or mobility aid users.



There is stepped access to the Gardens via the large wrought iron gates to the left of the Chapel. At the end of the York stone path, there is a single step up to a flat area. Beyond this, six semi-circular stone steps lead down the lower gardens lawn. There is a railing along the wall to left of the steps.



During dry summer weather, the lawn is firm and suitable for wheelchairs, but the ground inevitably becomes softer during the wetter months, which may restrict access for wheelchair users.



**Accessible toilets**

The nearest [accessible toilets](#) are located at the accessible entrance to the Dining Hall/Harrison Room/Old SCR.

Standard toilets are available at the same location.

During business hours (Monday to Friday), when both buildings are open, the accessible toilet facilities on the ground floor of [Old Library](#) or on the 1<sup>st</sup> floor (lift access) of the [Christopher Dobson Building](#) might be a more convenient option.